



DC Development

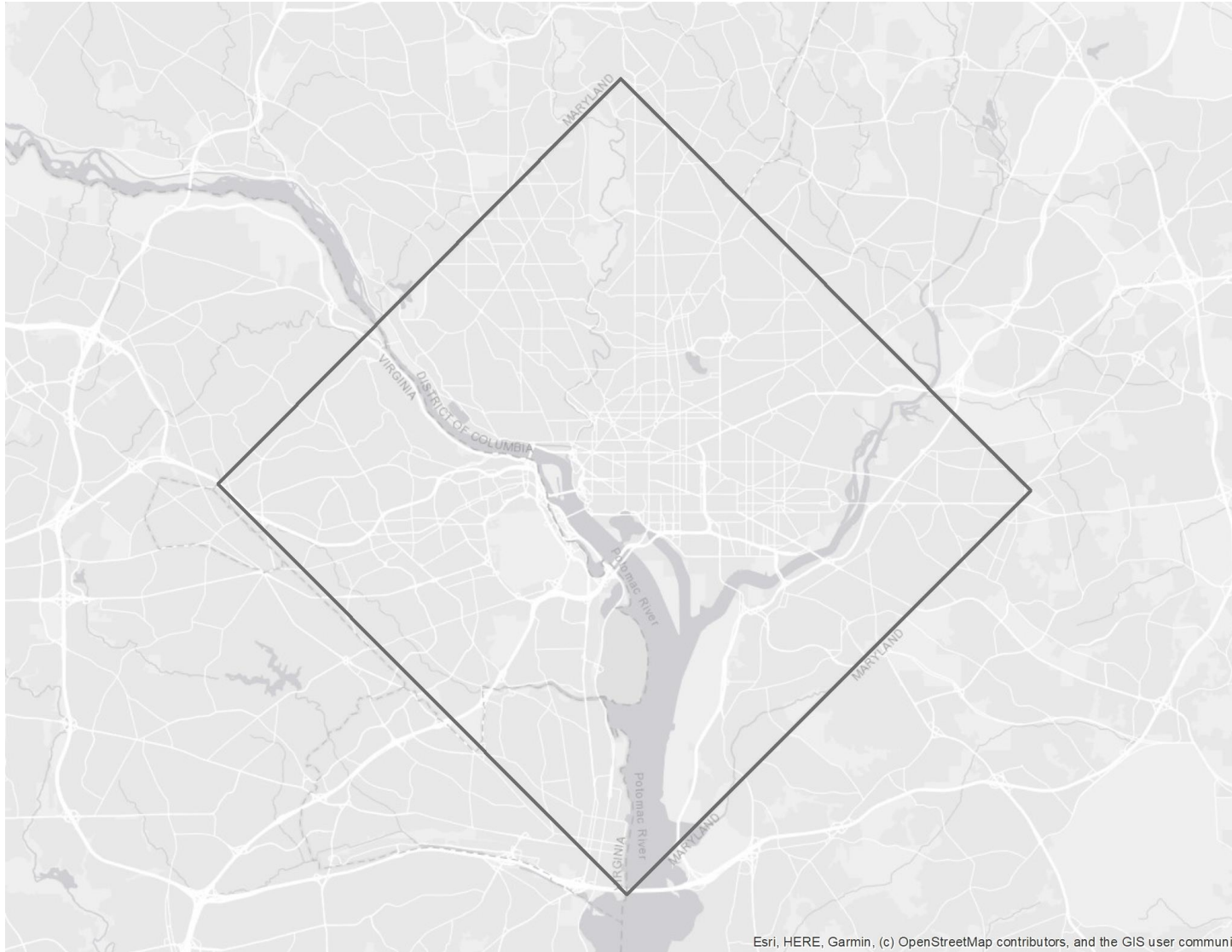
BRIAN D. KRAFT

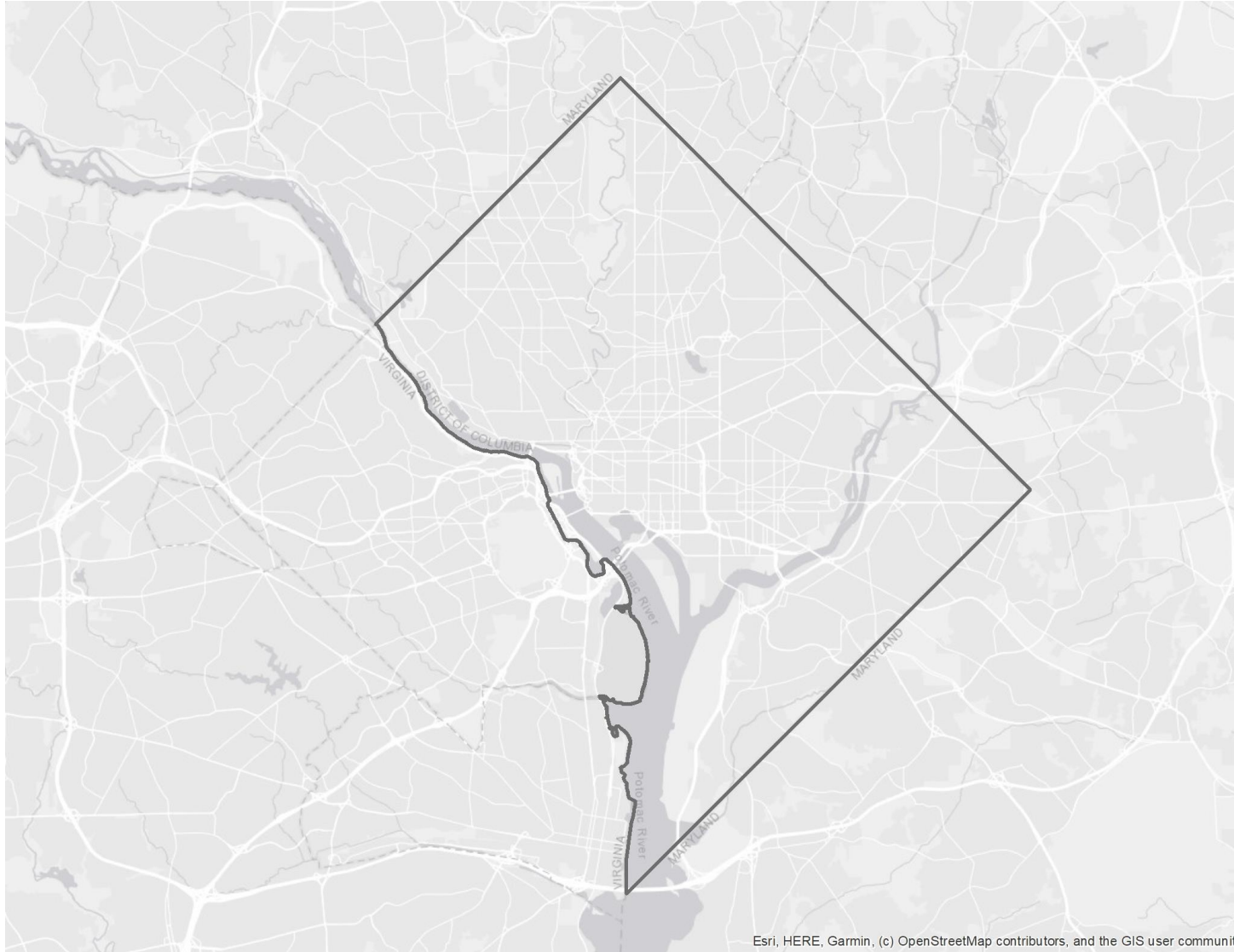


DC Area

Ten Miles Square

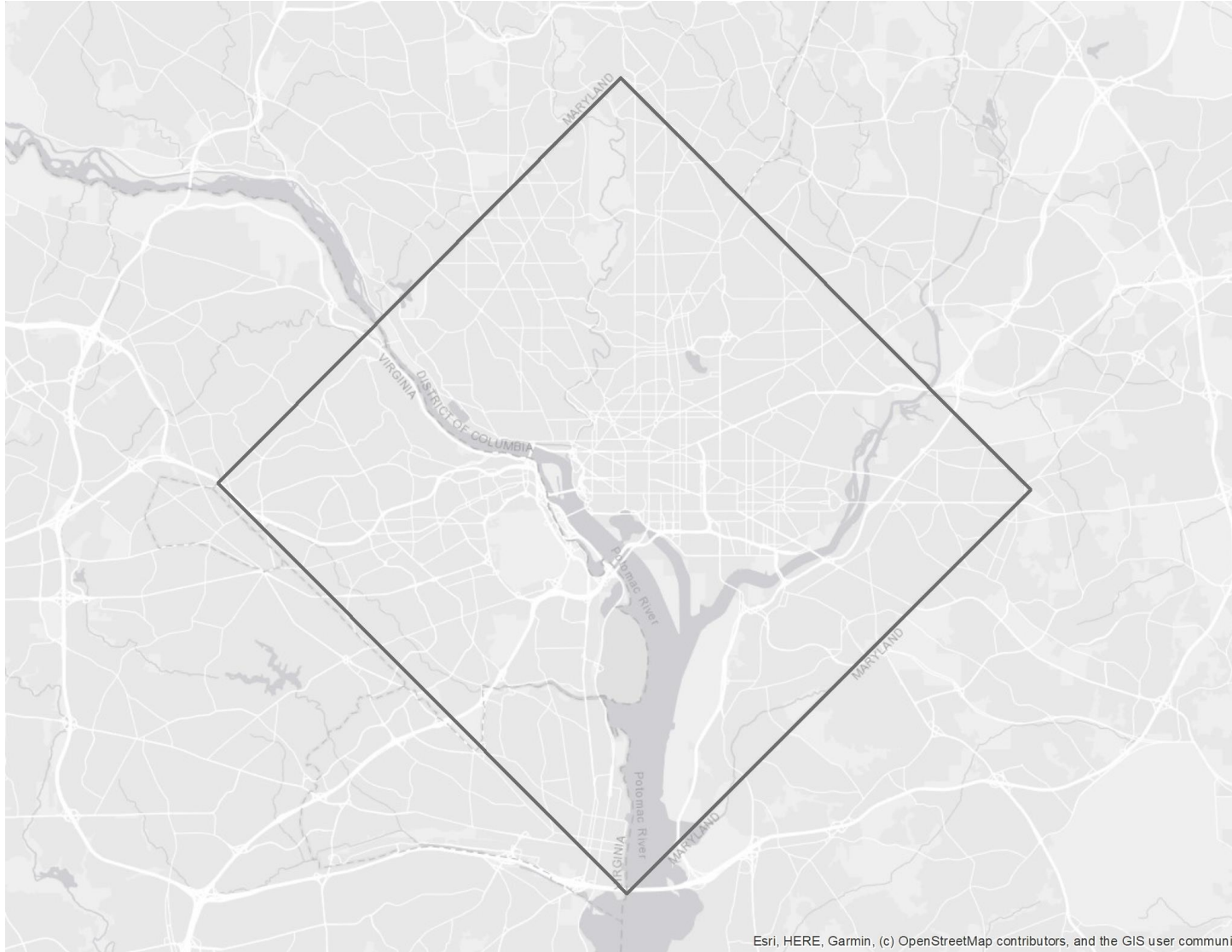
Article 1, Section 8 of the US Constitution gives Congress the power to “exercise exclusive Legislation in all Cases whatsoever, over such District (not exceeding ten Miles square) as may, by Cession of particular States, and the Acceptance of Congress, become the Seat of the Government of the United States.”





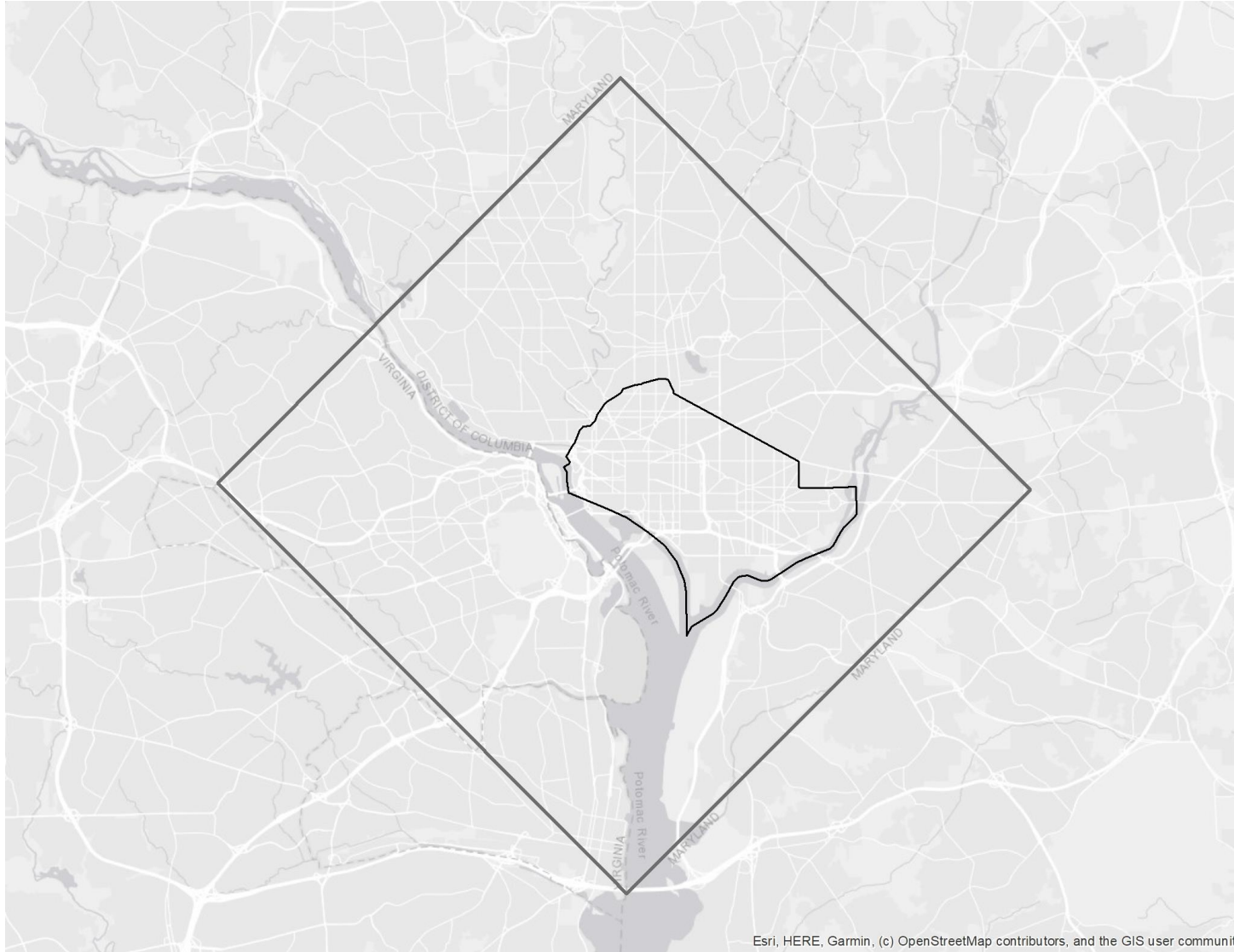
Retrocession

1847



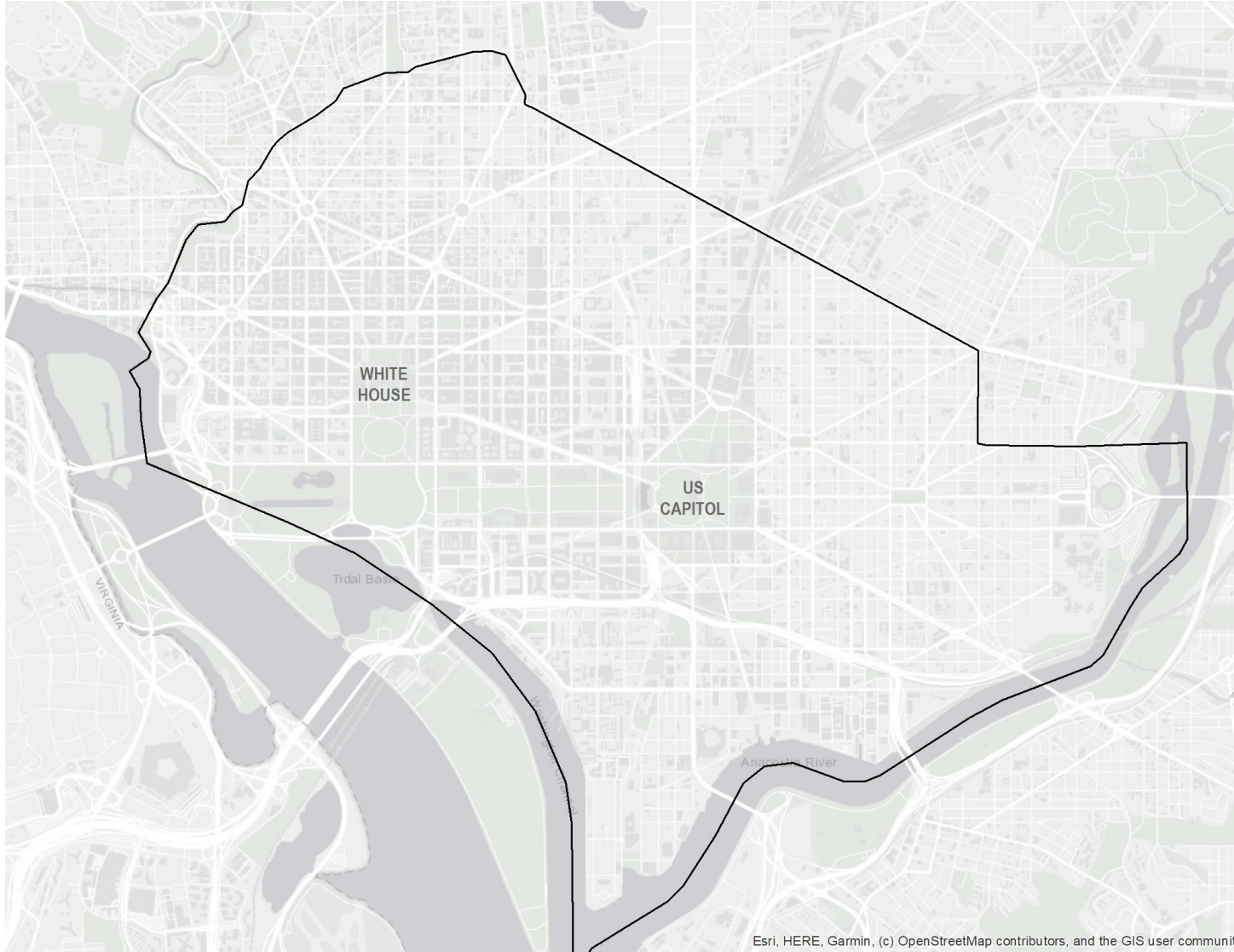
Ten Miles Square

Included the colonial port towns of George Town, Maryland, and Alexandria, Virginia



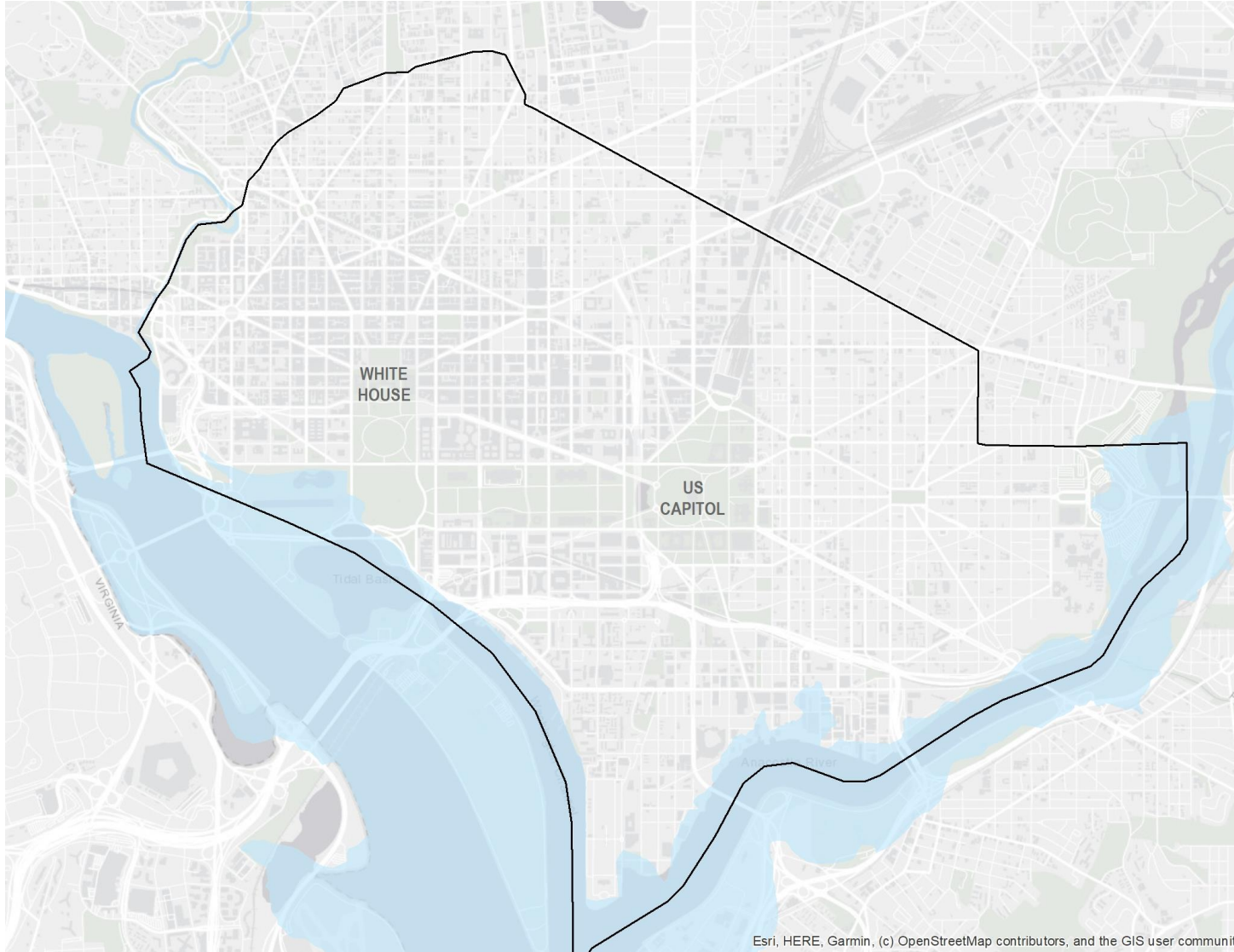
L'Enfant Plan

1791



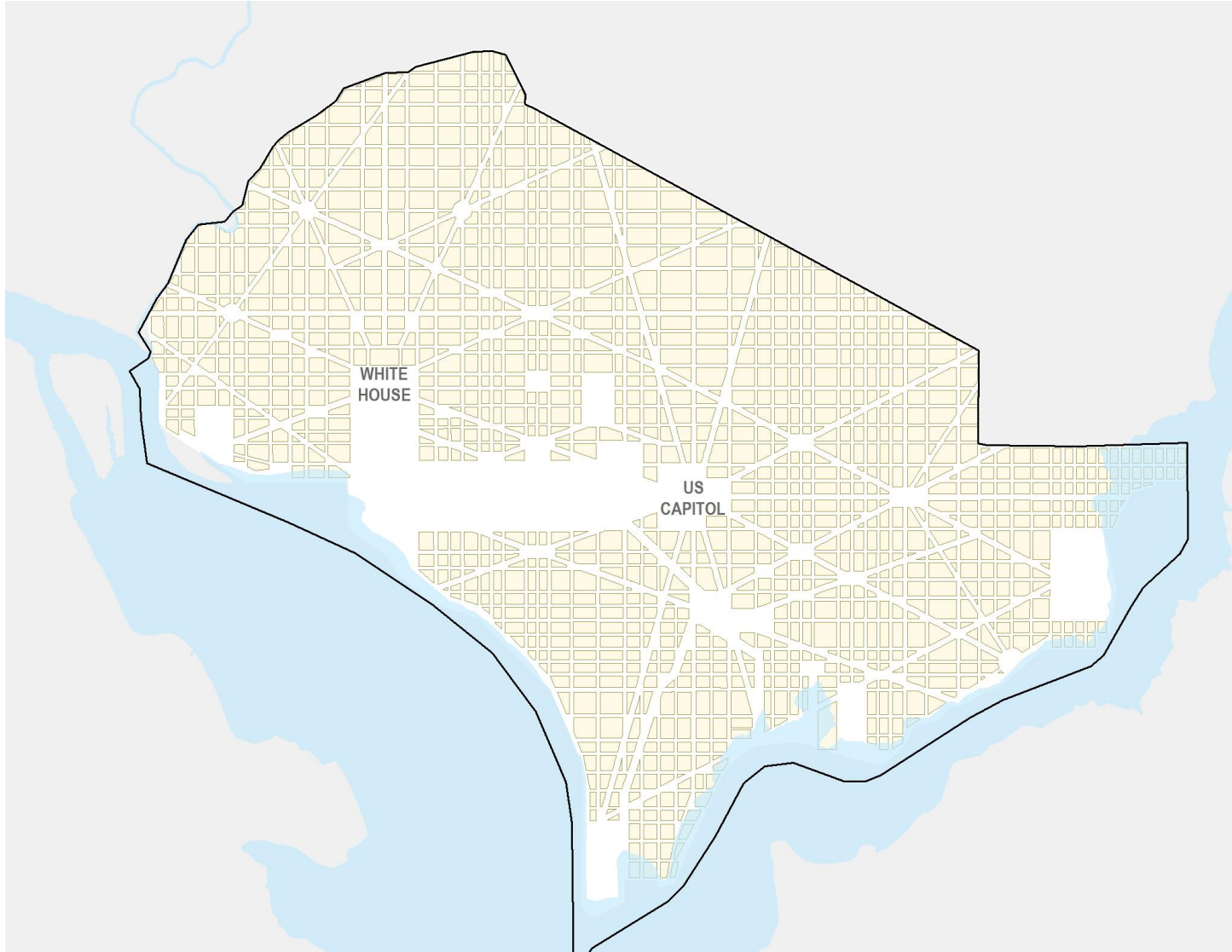
L'Enfant Plan

1791



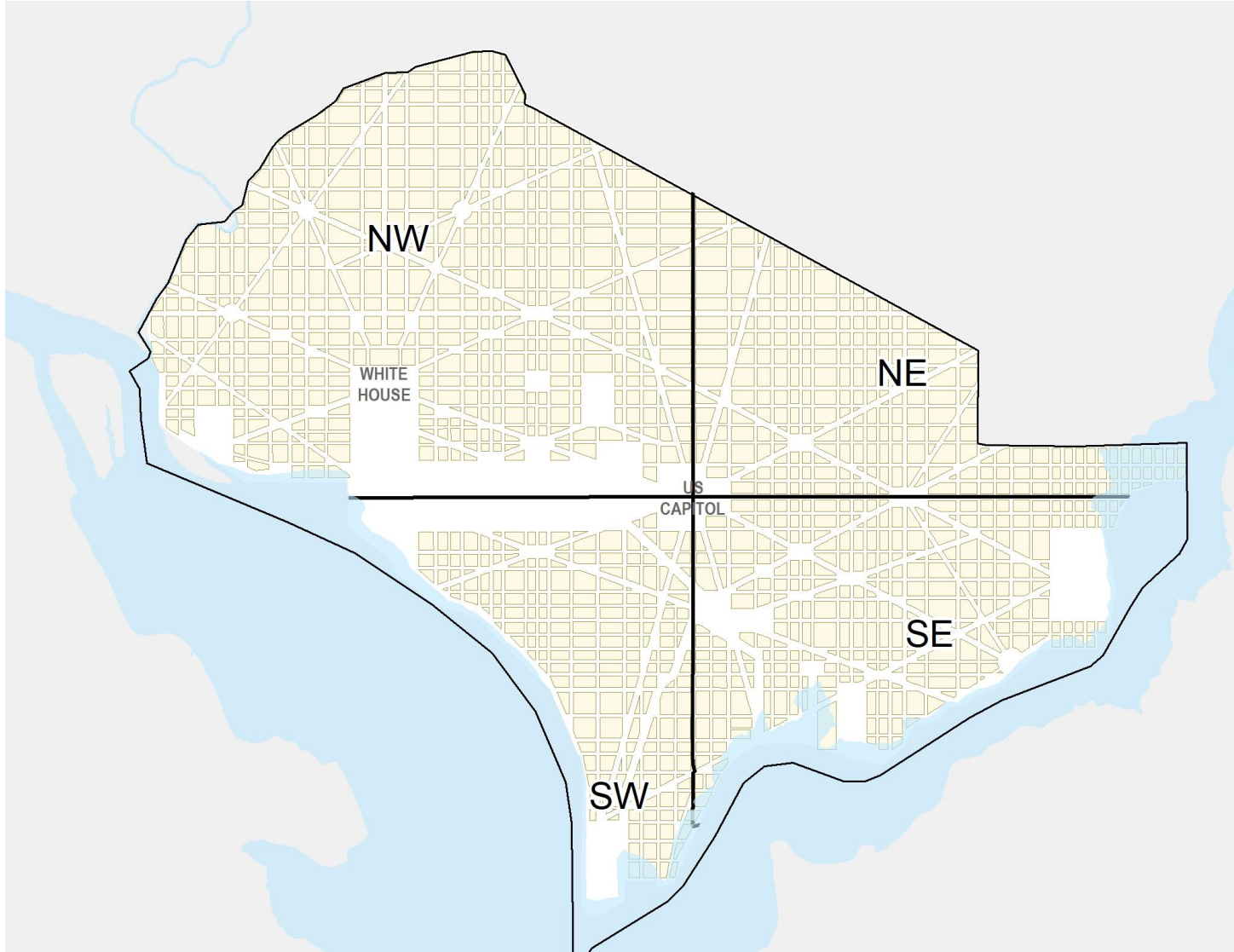
L'Enfant Plan

Water/Landfill



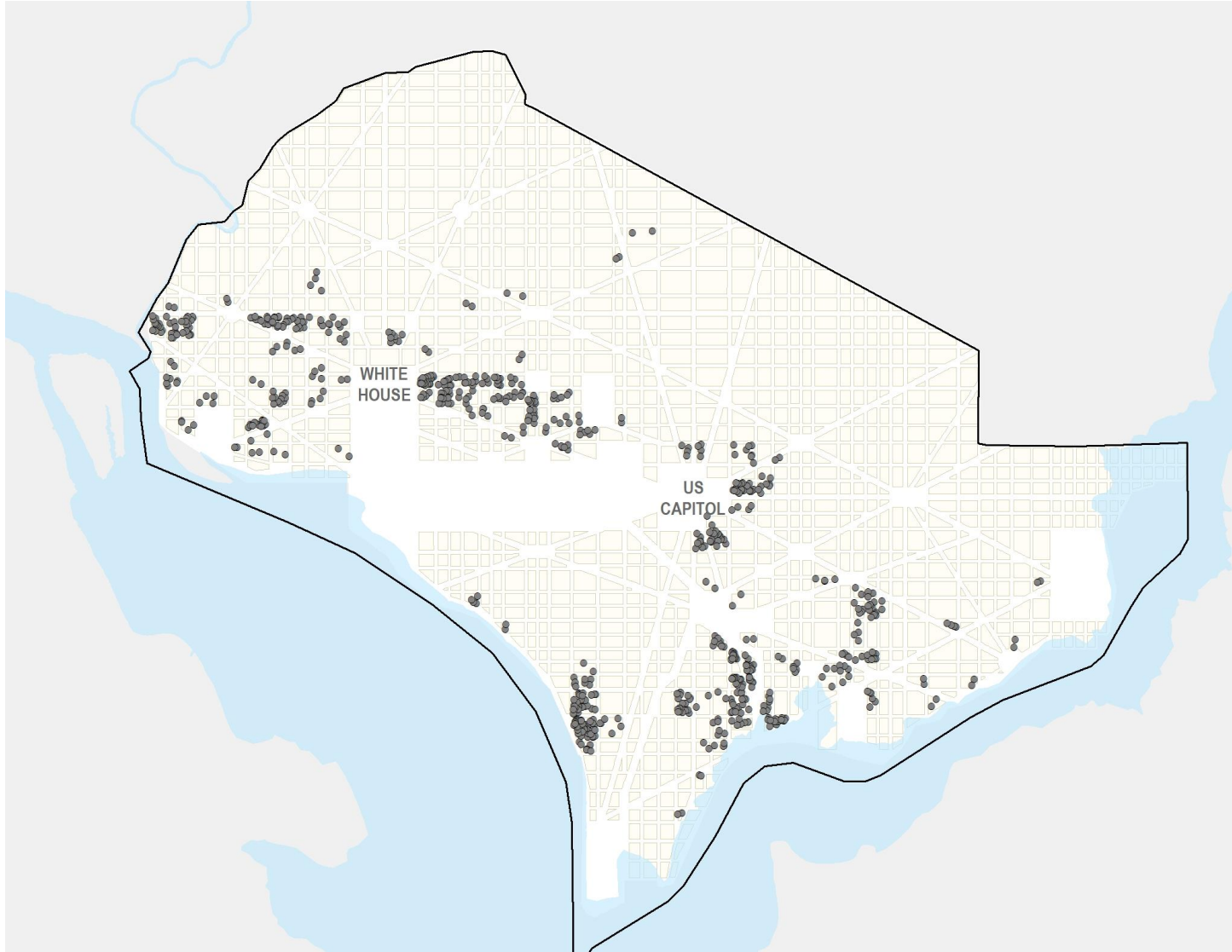
L'Enfant Plan

1791



Quadrants

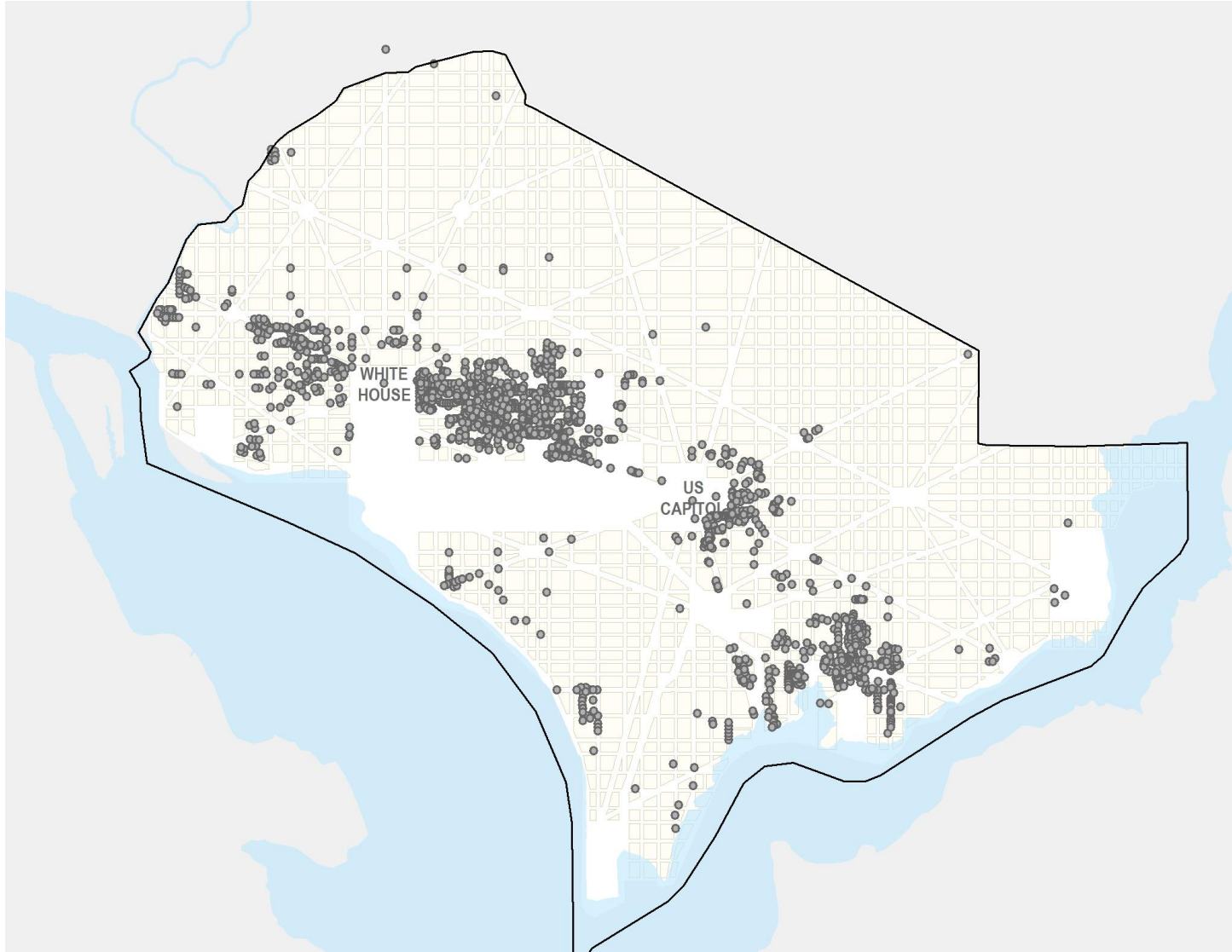
About 1870



Development

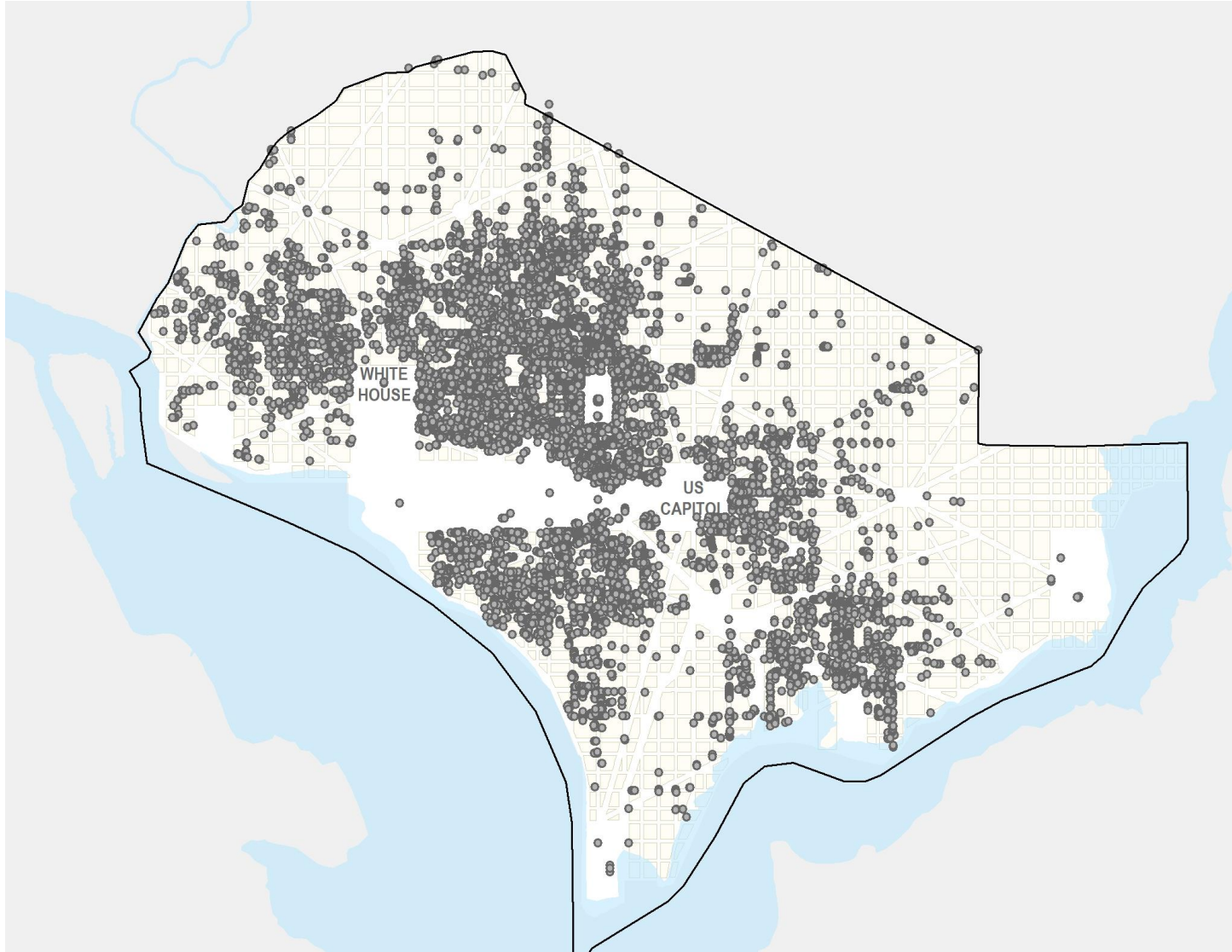
as of 1800

This is the year the federal government moved here from Philadelphia



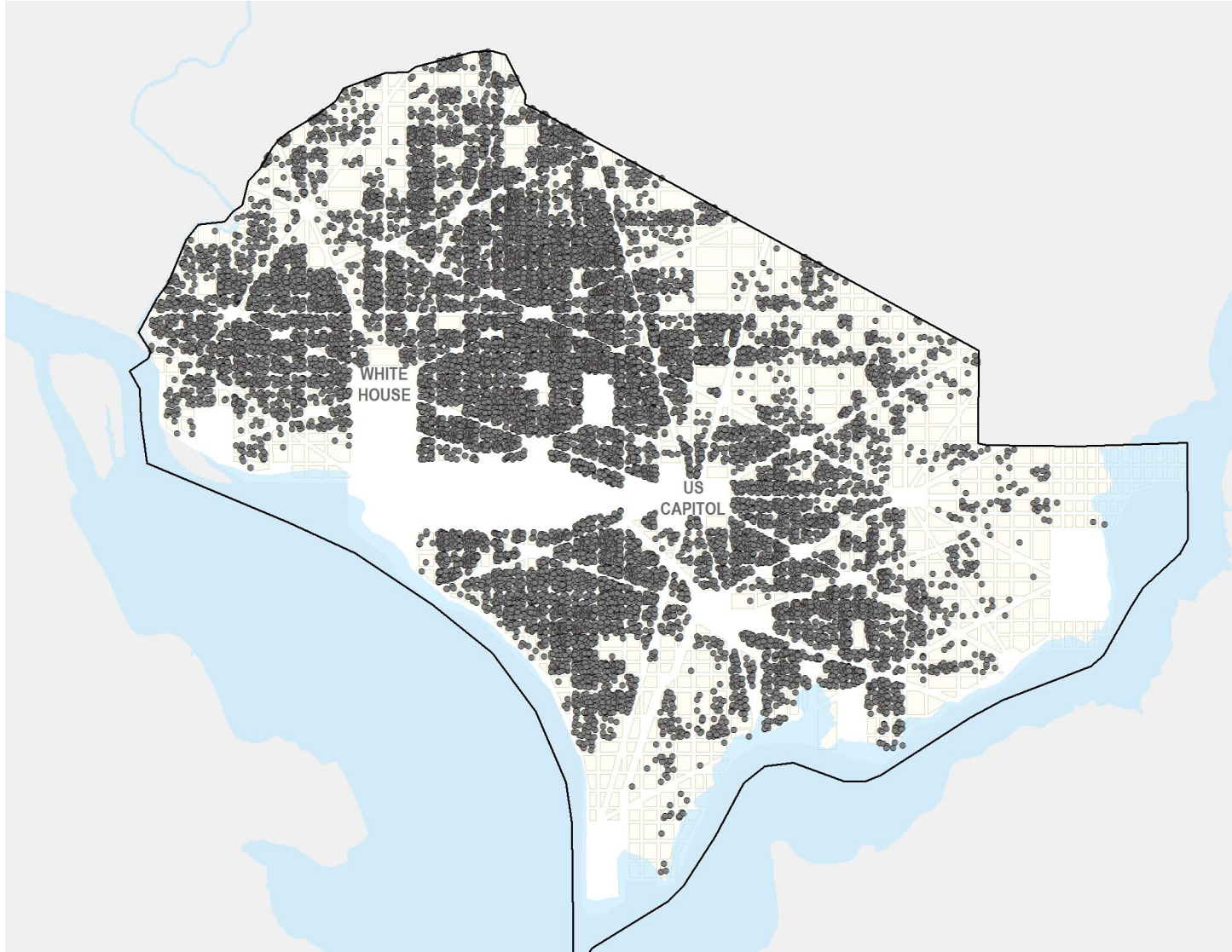
Development

as of 1822



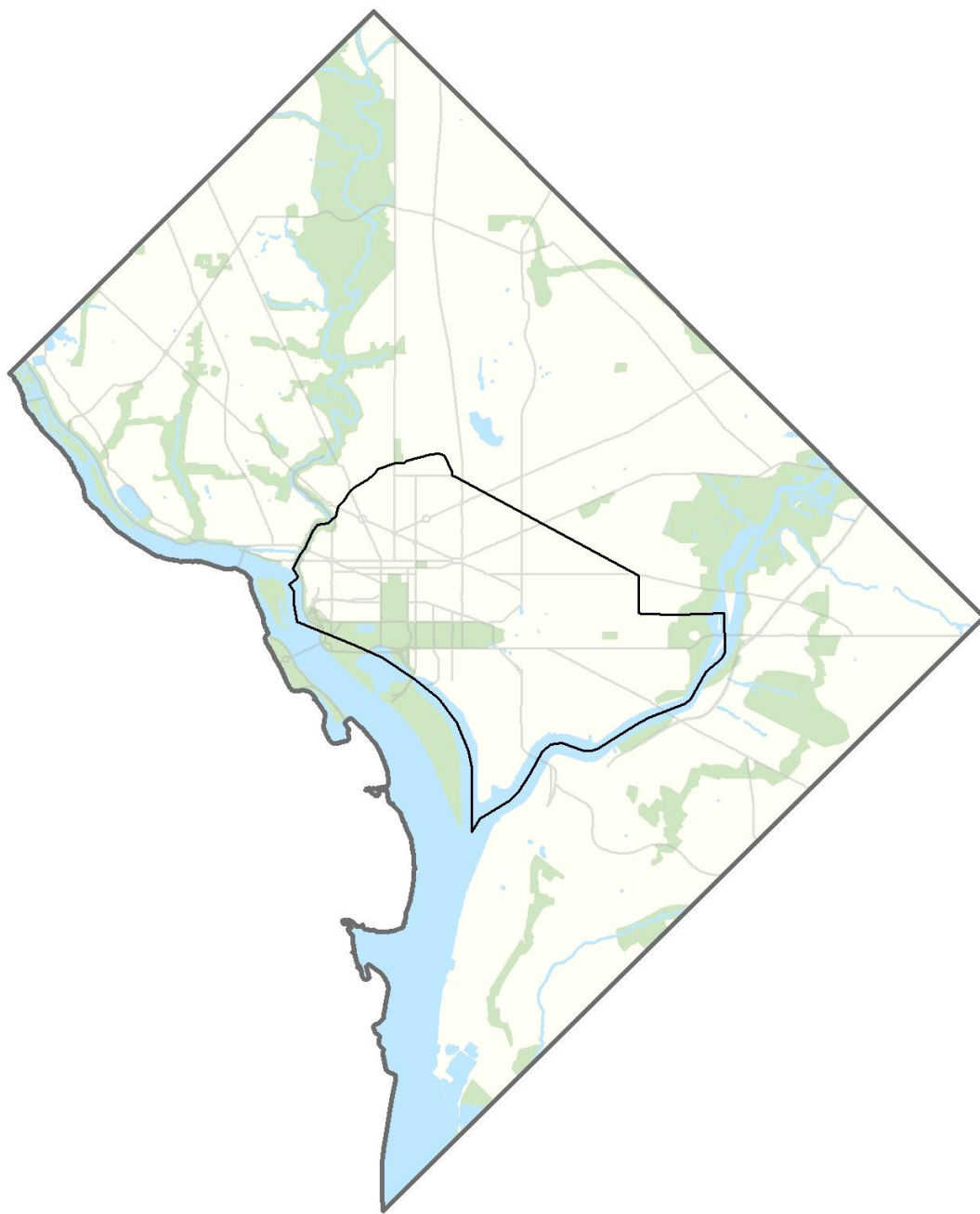
Development

as of 1858

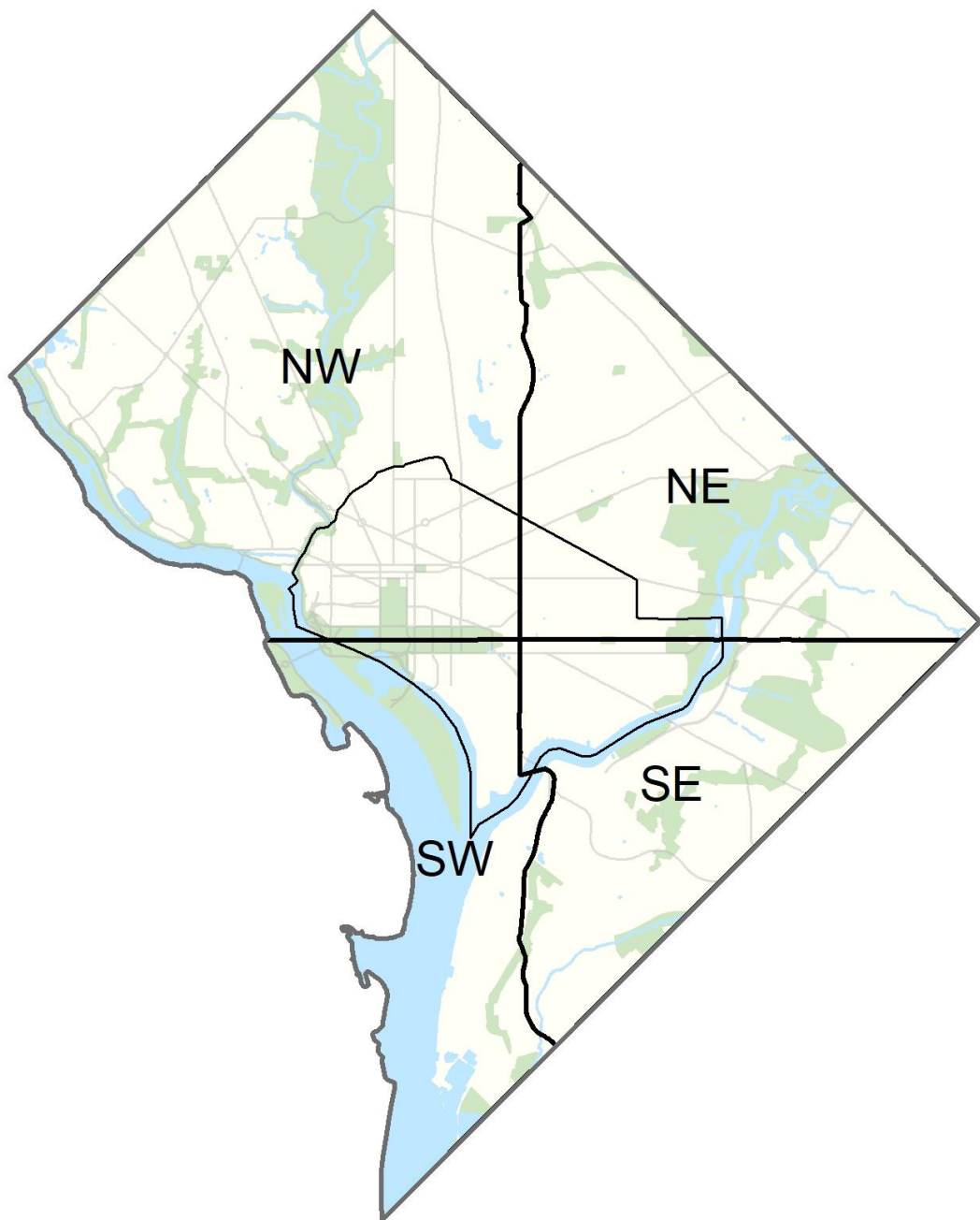


Development

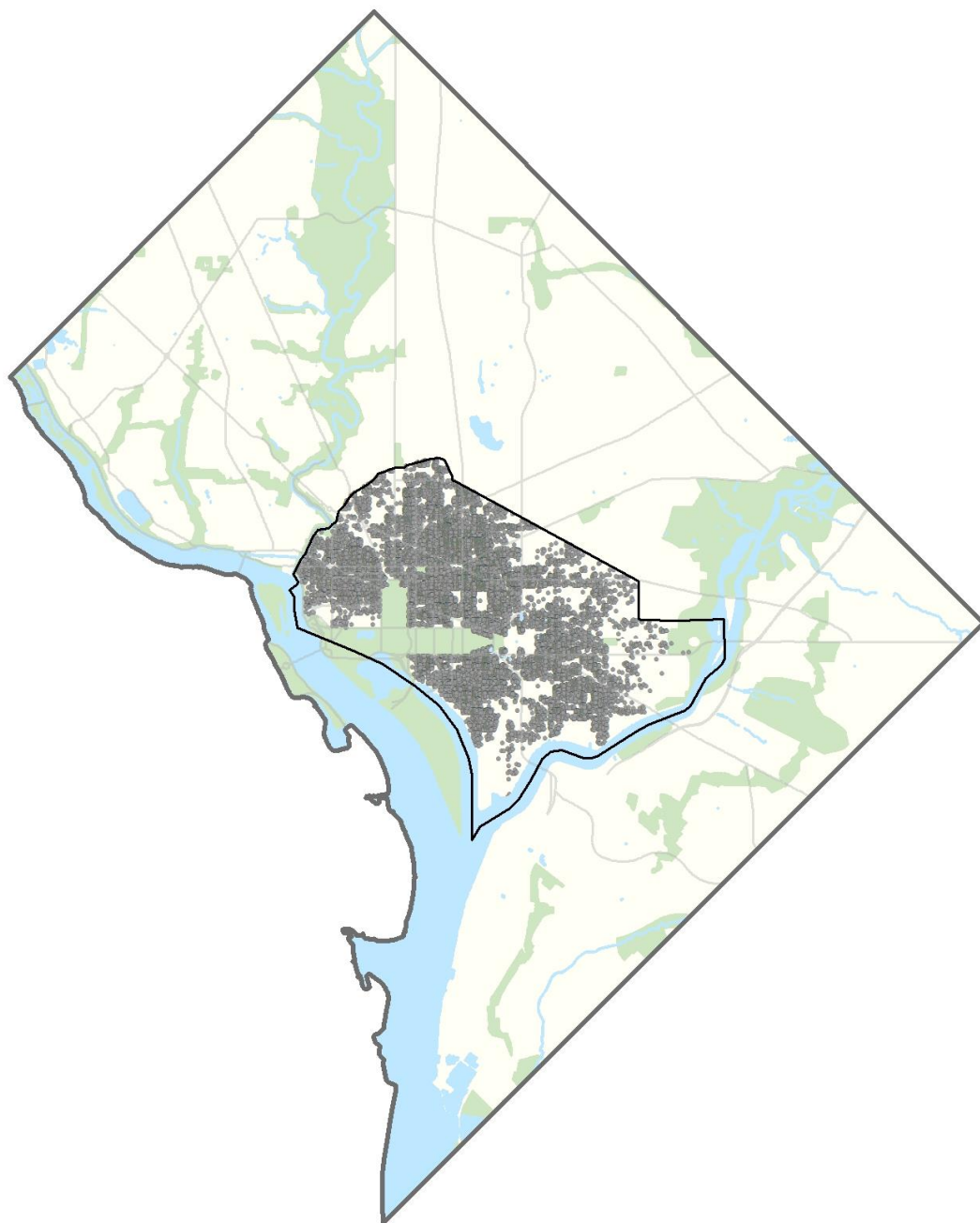
as of 1873



DC



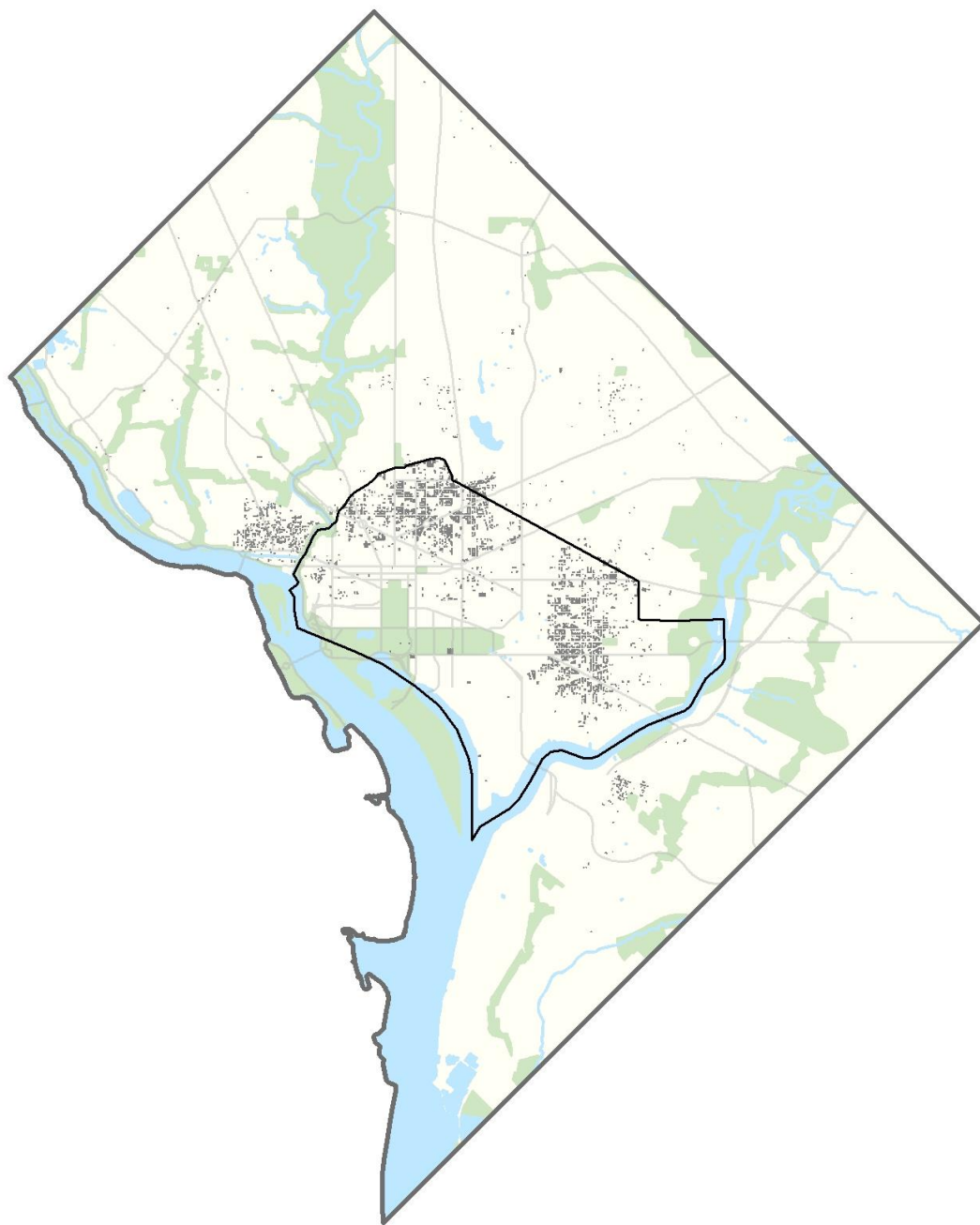
DC



Development

All the buildings in the Old City in 1873

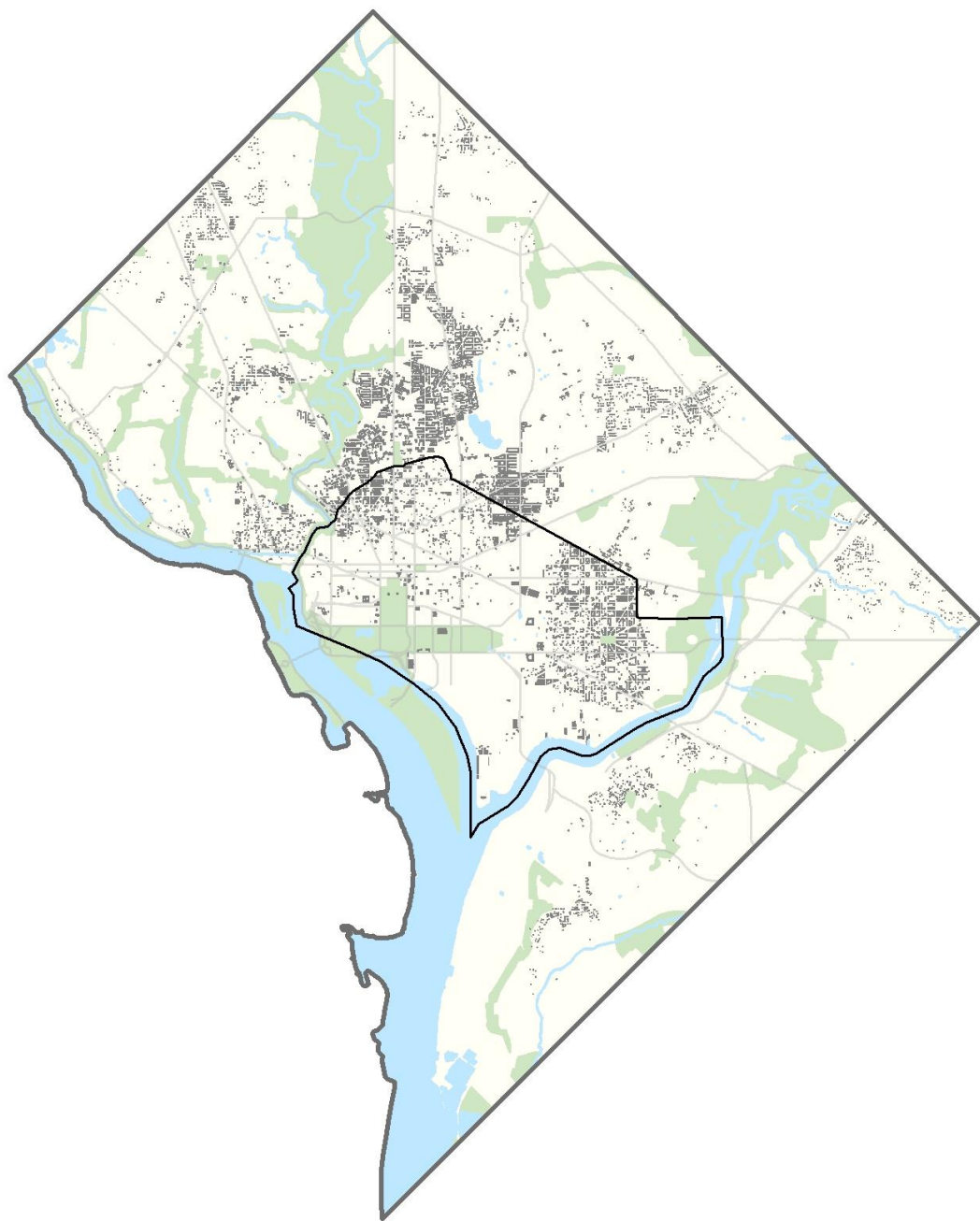
The only significant cluster elsewhere is Georgetown



Development

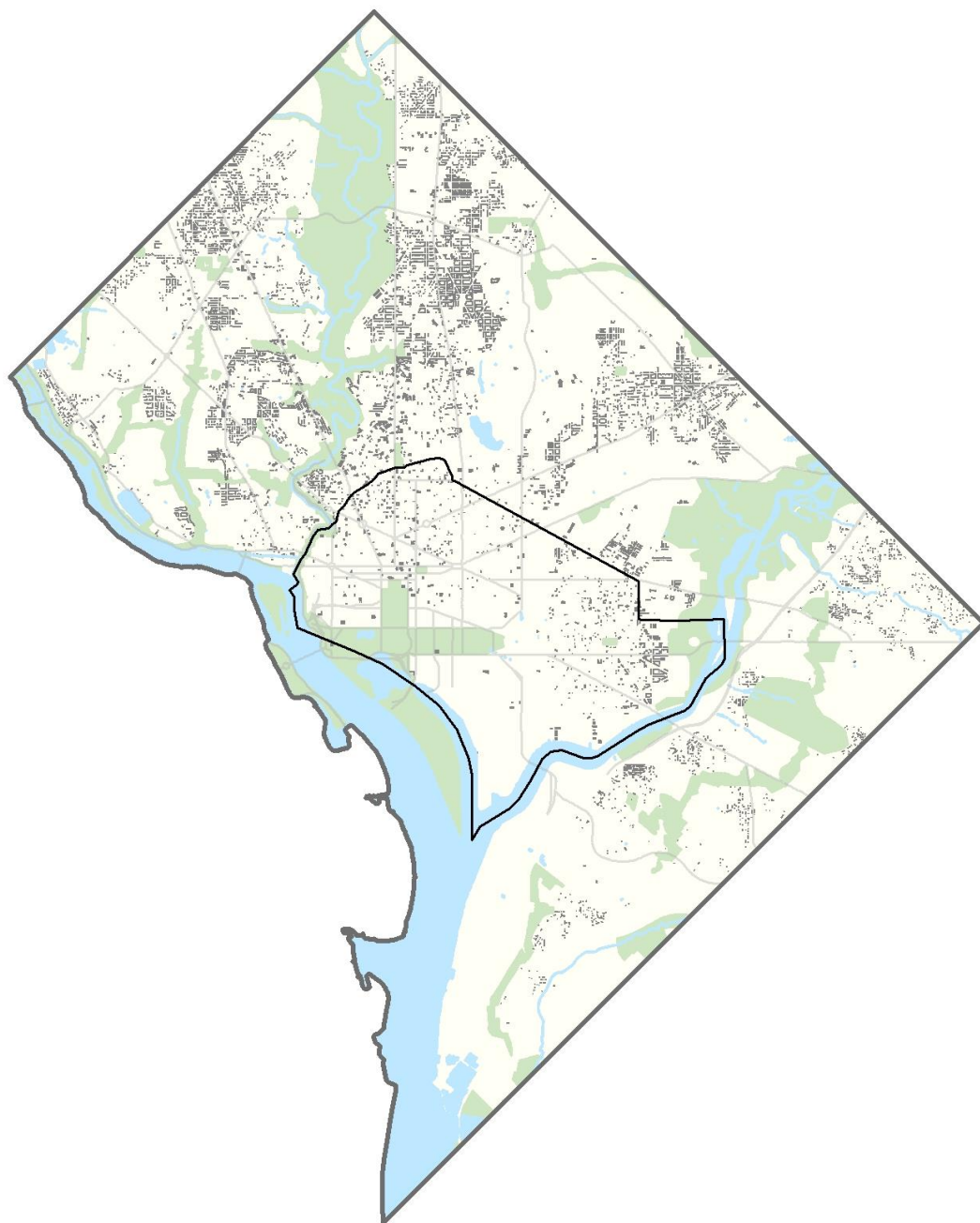
1873 to 1891

Buildings that exist today that
were built in that period



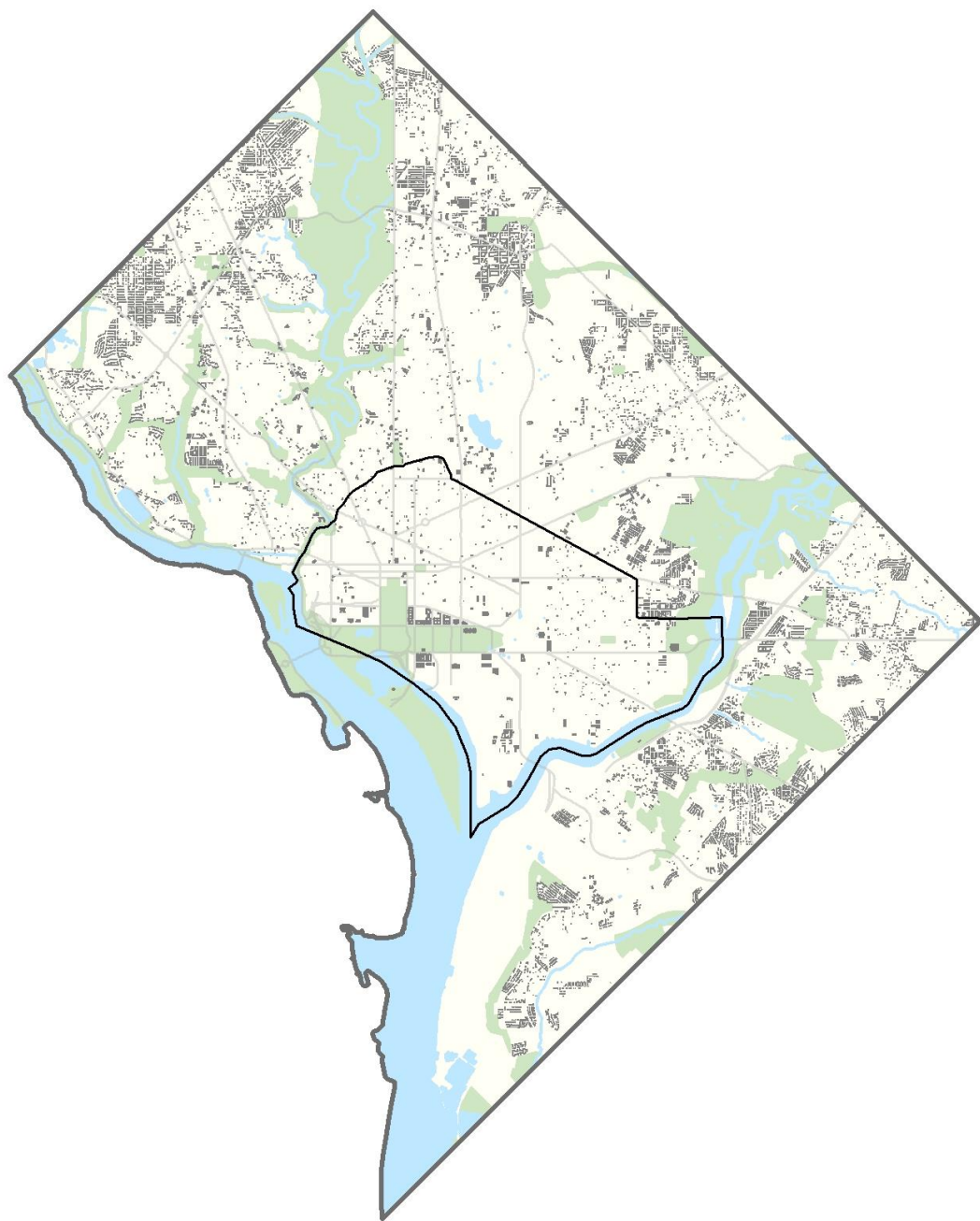
Development

1892 to 1917



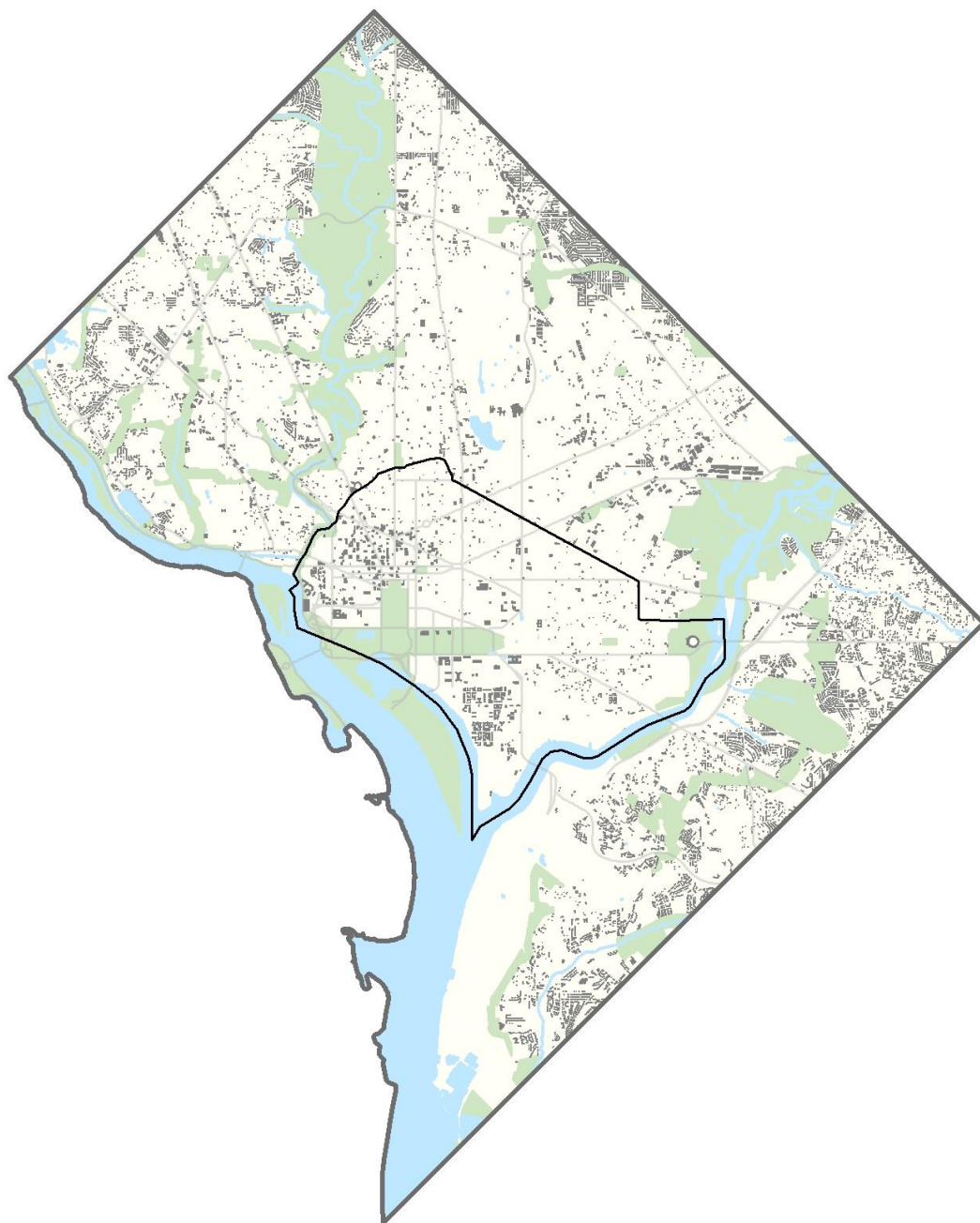
Development

1918 to 1929



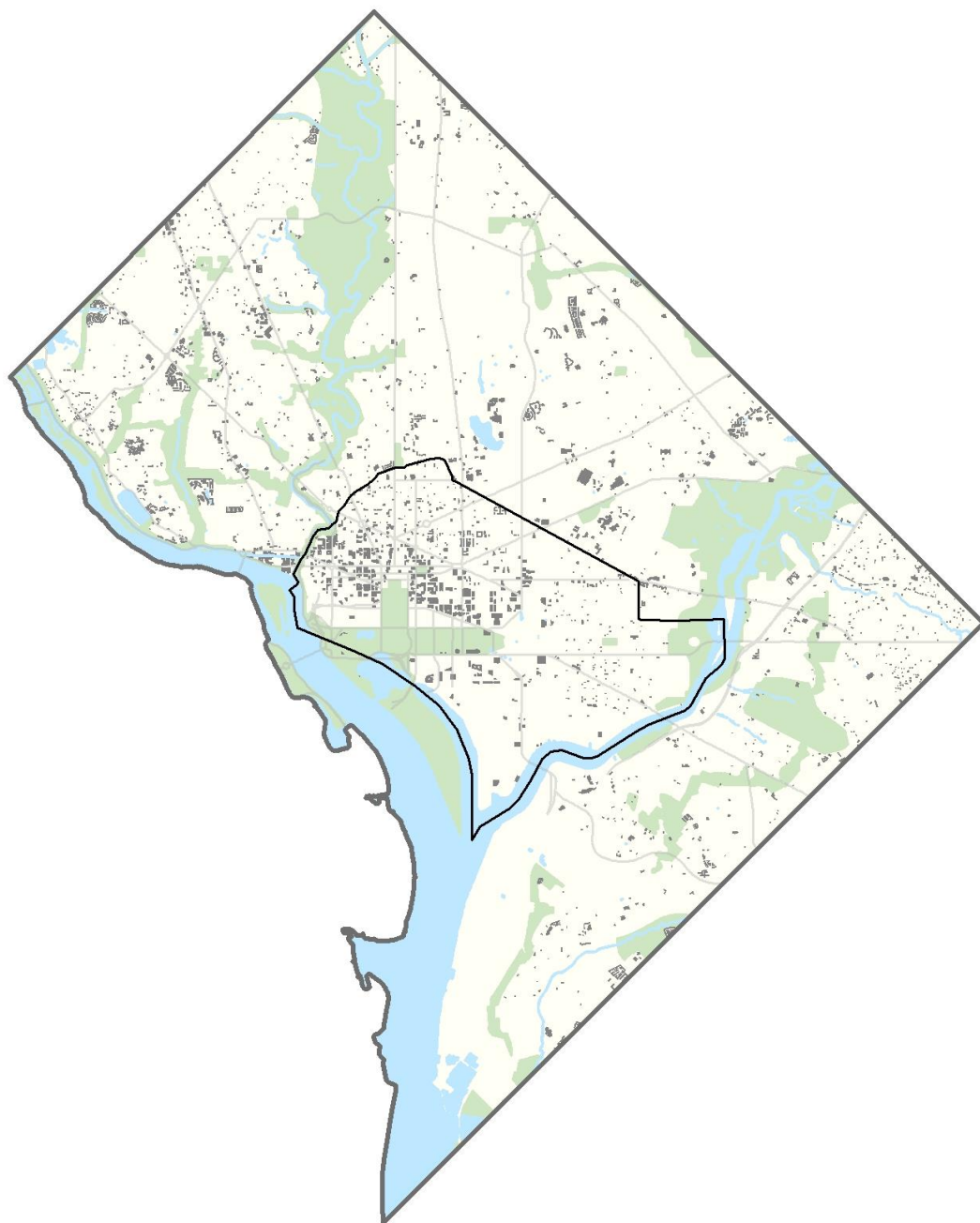
Development

1930 to 1945



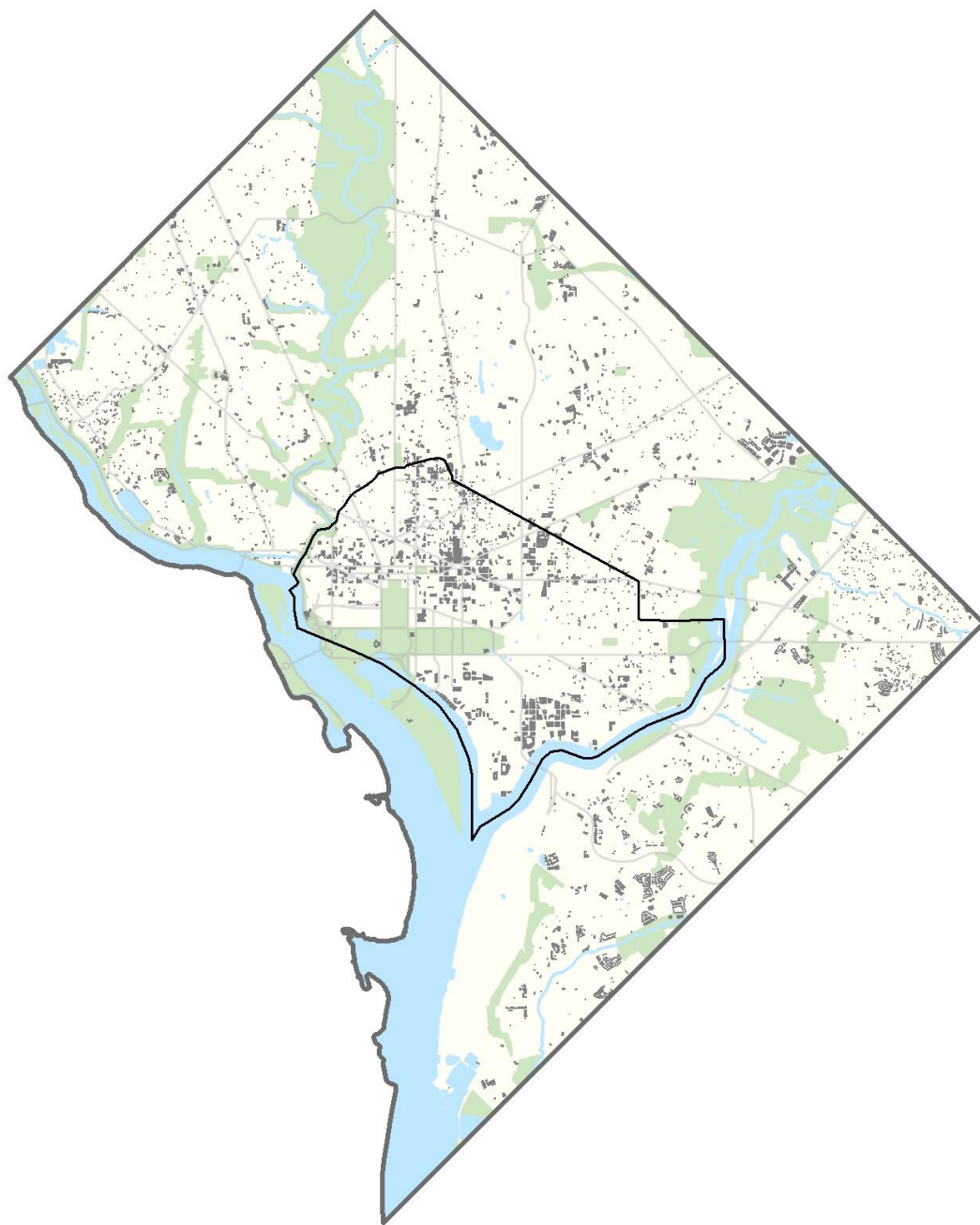
Development

1946 to 1971



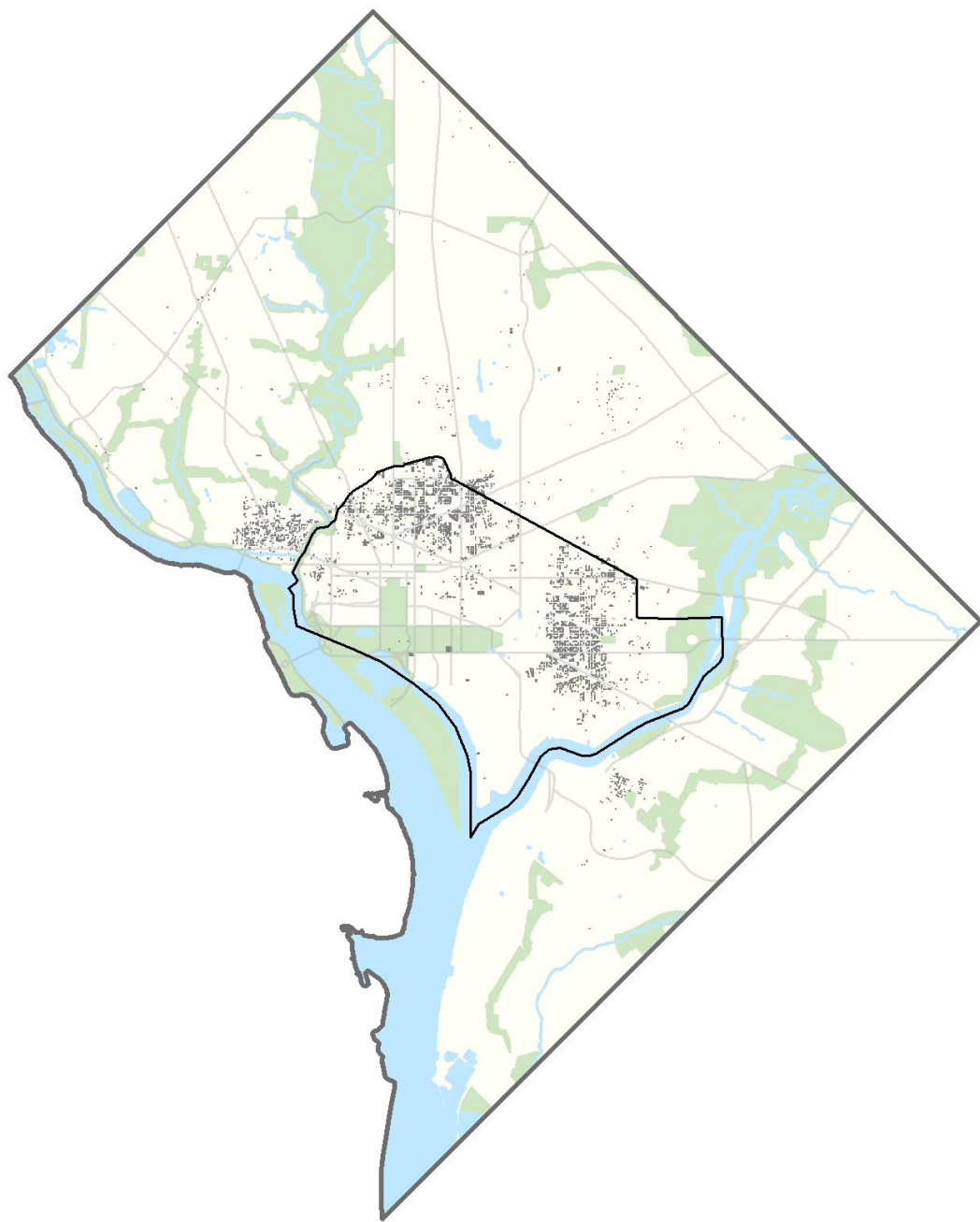
Development

1971 to 1997

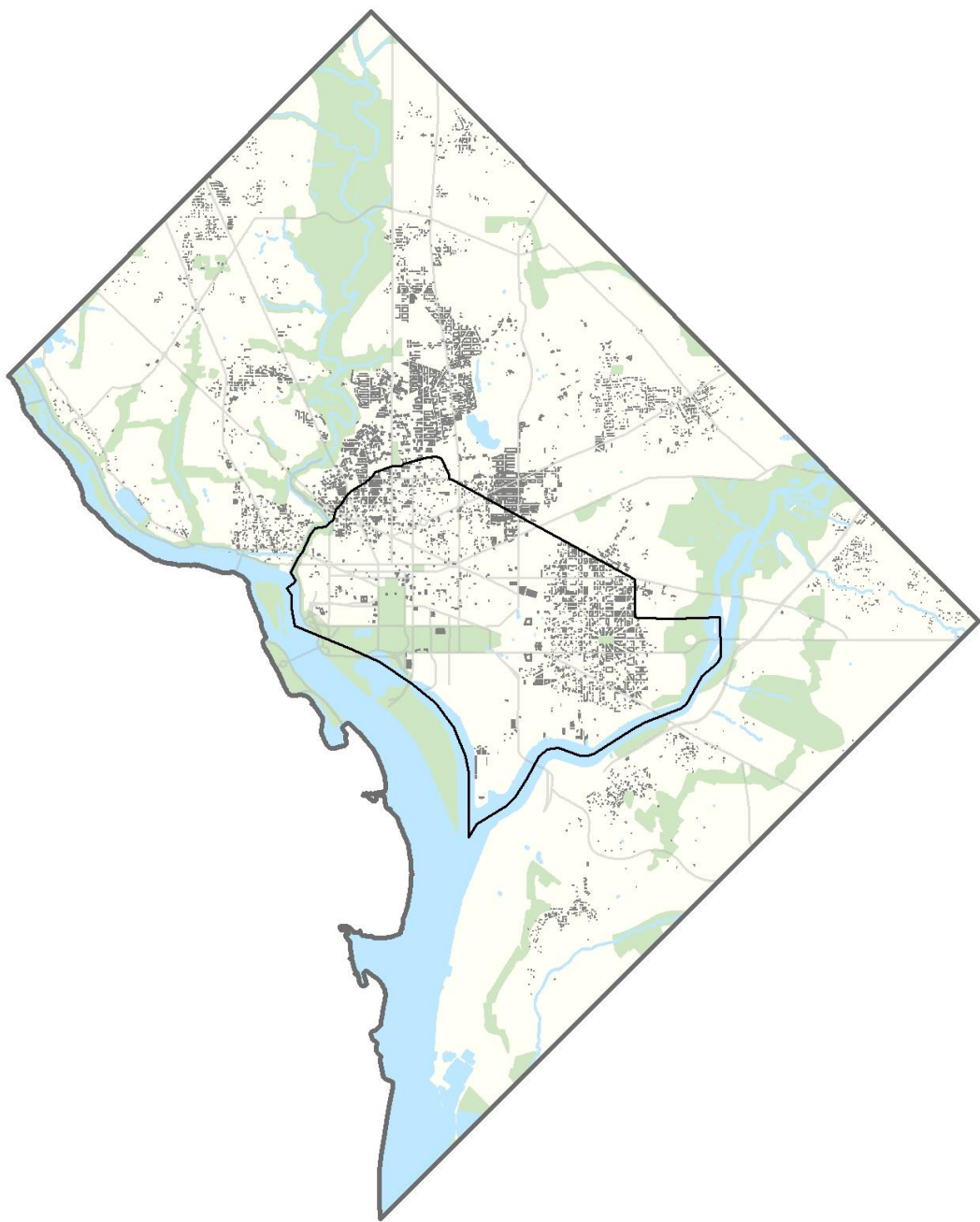


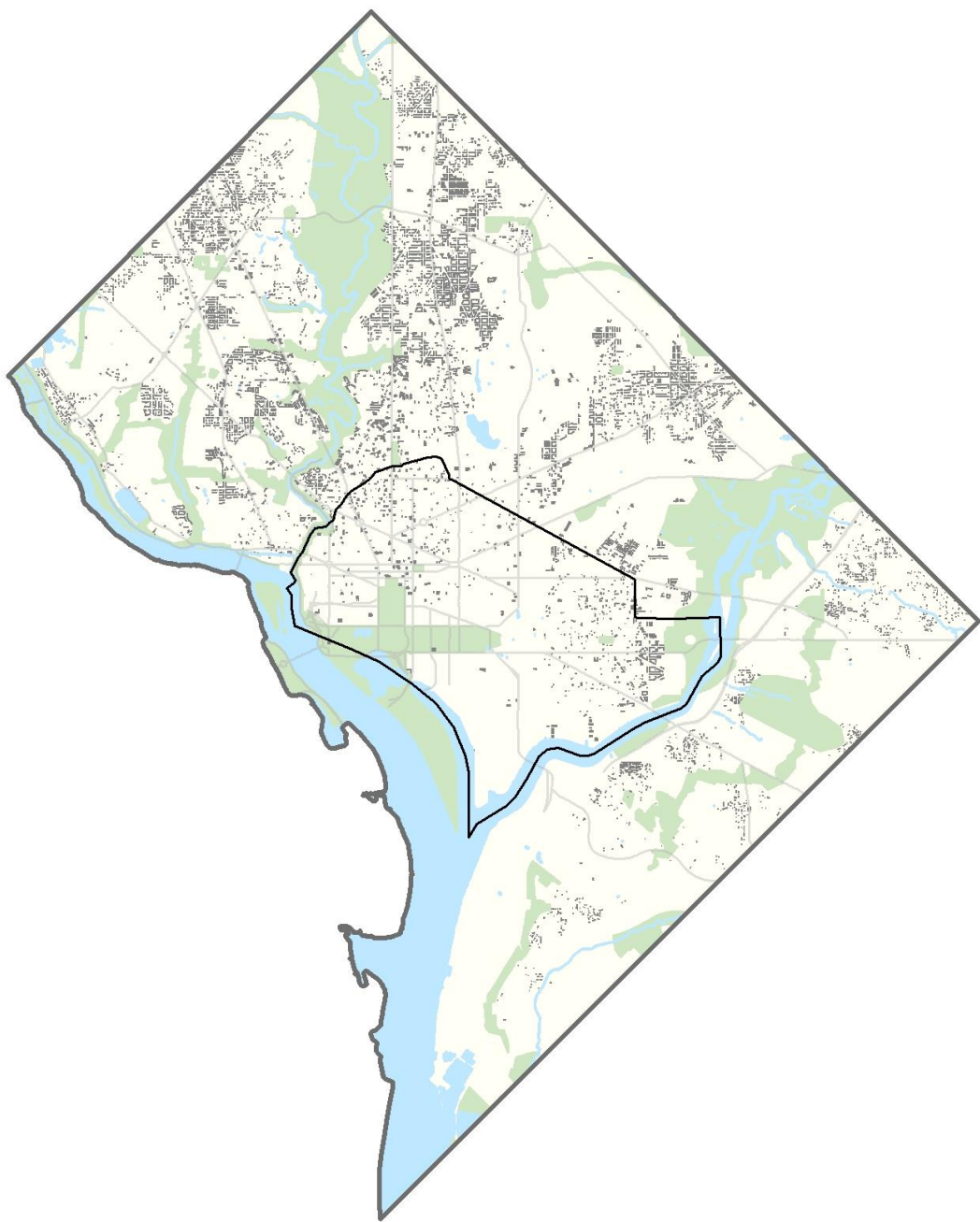
Development

1998 to 2021



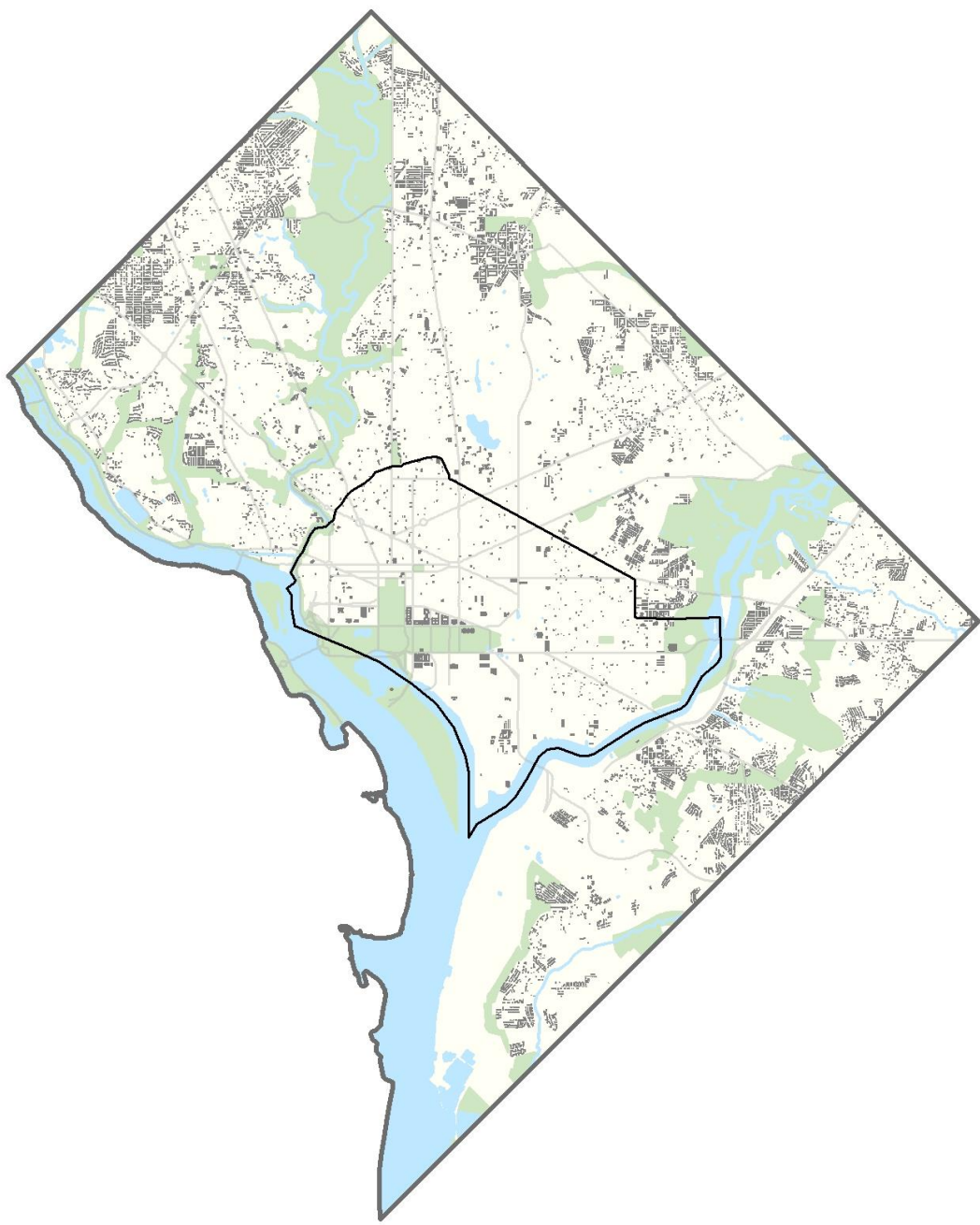
1873 . . .





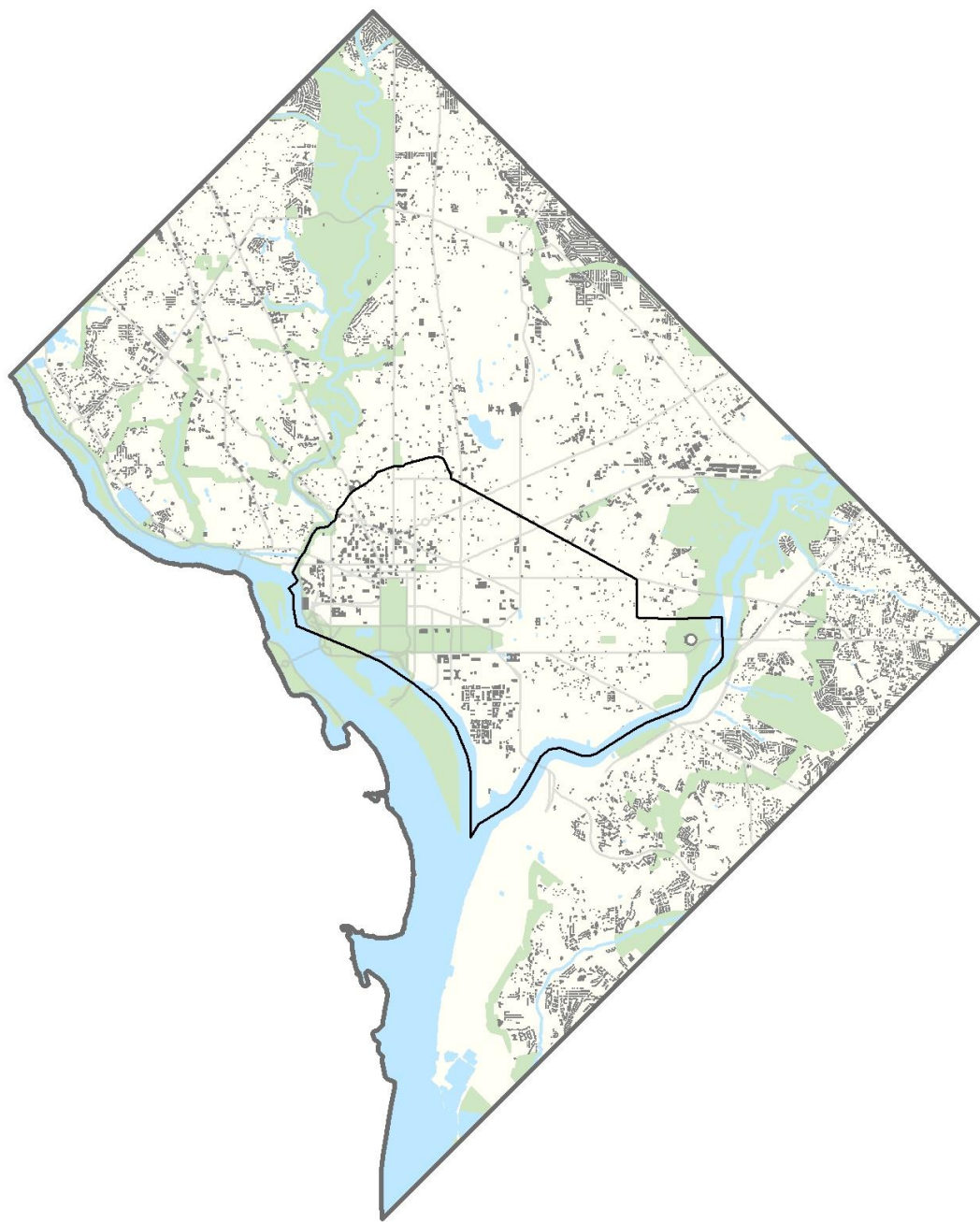
• • •



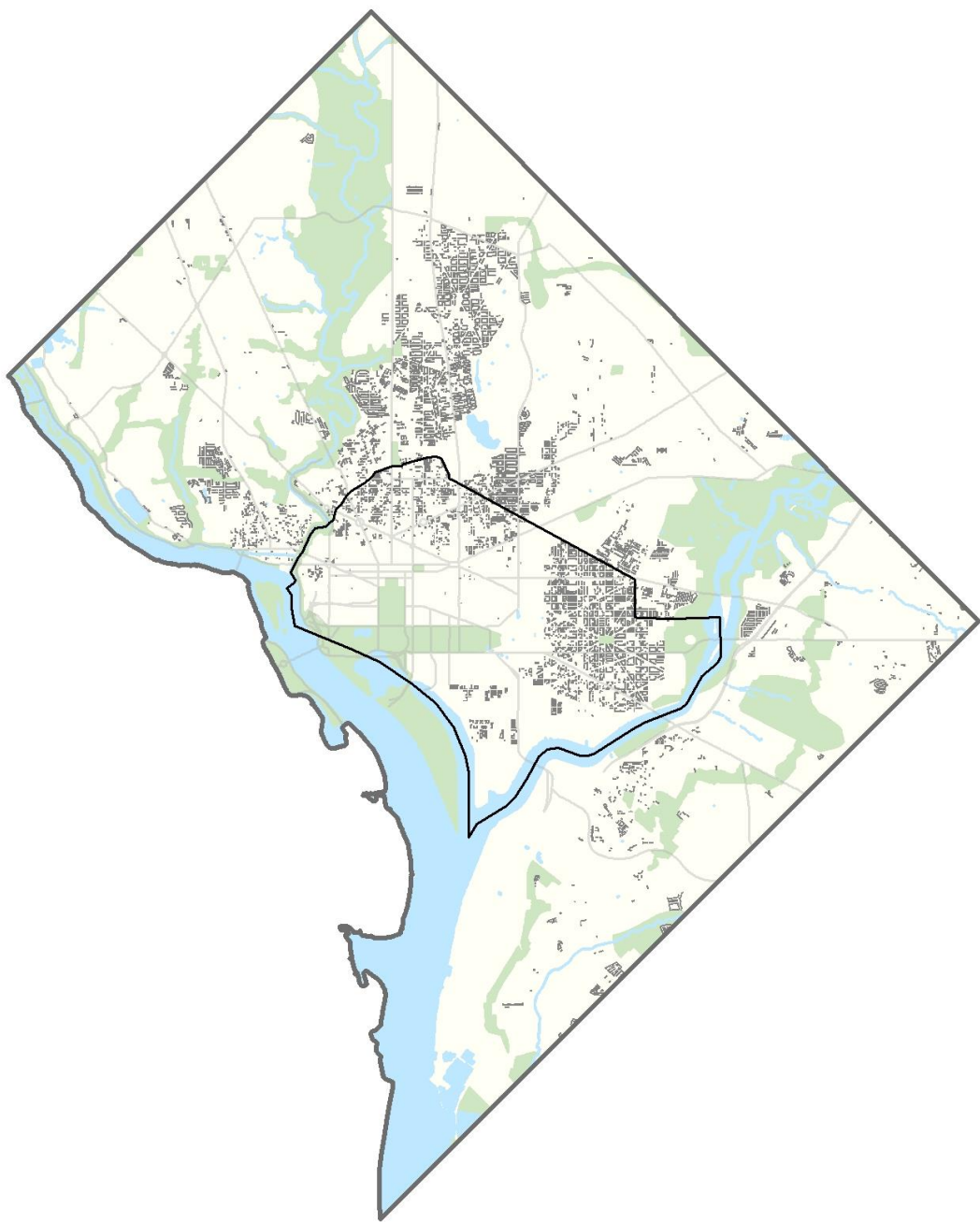


-
-
-

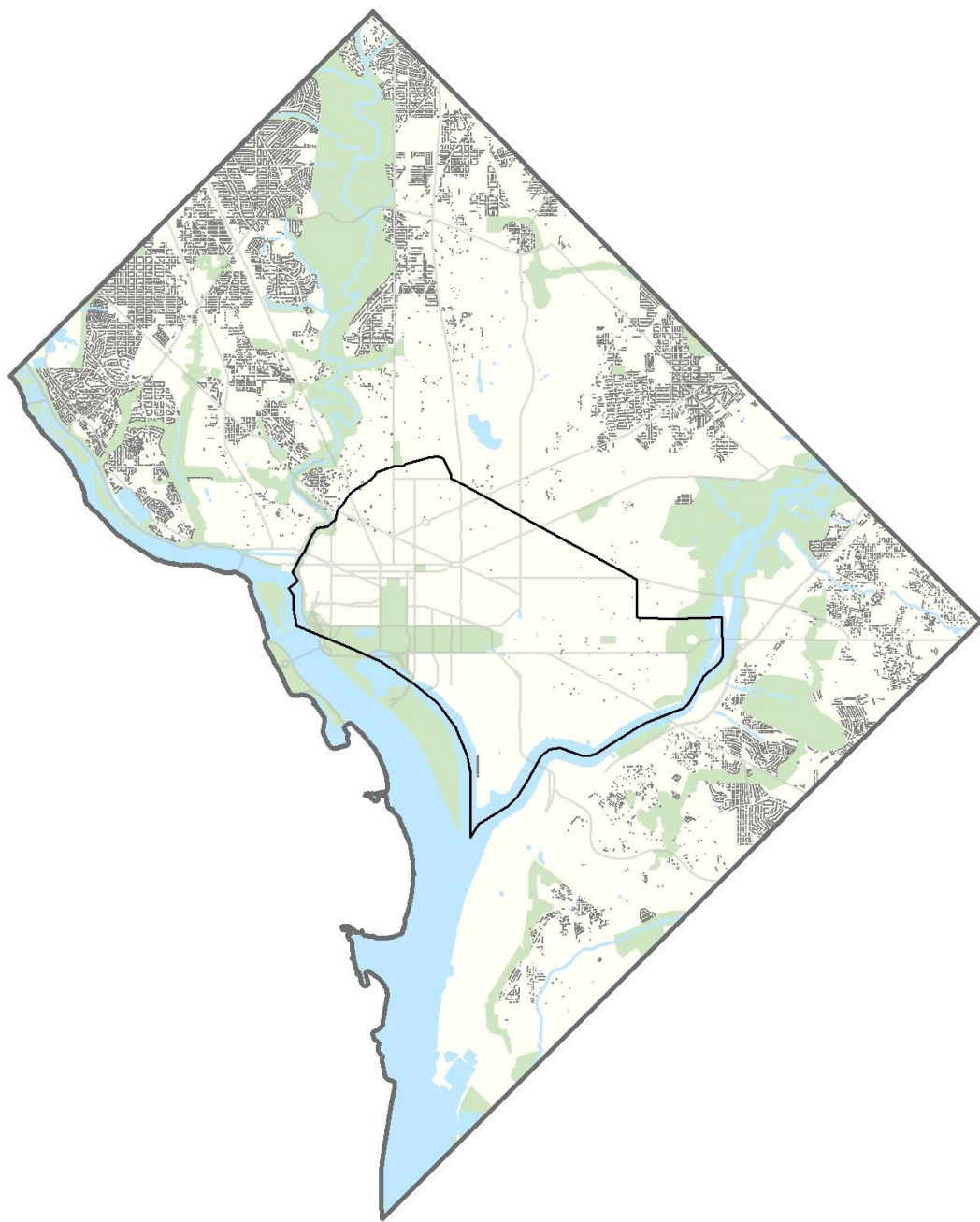




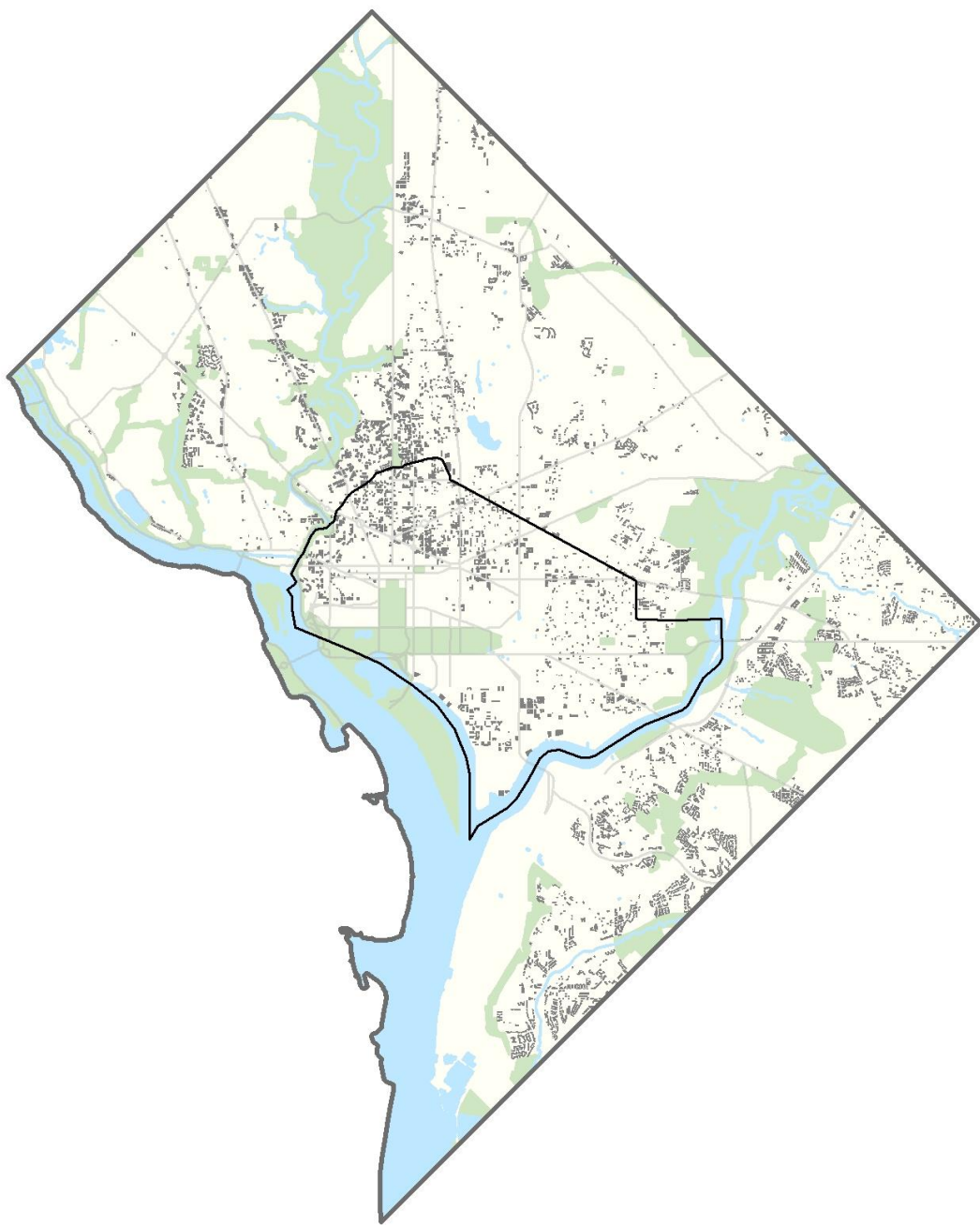
... to 1971



Rowhouse Dwellings



Detached Dwellings



Apartment Houses



1794

WHEAT ROW



1858

931 M STREET NW



1885

1301 WALLACH PL NW



1885

1330 VALLEY PL SE



1886

933 8TH STREET NW



1904

1939 BILTMORE STNW



1904

2223 1ST ST NW



1909

1343 OTIS PL NW



1911

1052 48TH PL NE



1916

1319 QUINCY ST NW



1916

2825 BRENTWOOD RD NE



1925

3628 HORNER PL SE



1926

620 GALLATIN ST NW



1928

FOXHALL VILLAGE

Q ST NW



1937

2604 BRANCH AVE SE



1950

632 BRANDYWINE ST SE



1951

715 KENNEDY ST NE



1951

6901 32ND ST NW



1954

3200 CHESTNUT ST NW



1952

6824 32ND ST NW



1965

3025 P ST SE



1969

603 57TH ST NE



1979

FORT LINCOLN



1979

WESTOVER PLACE

NEW MEXICO AVE NW



1980

THE TERRACES

BARNABY TERRACE SE



1981

HILLANDALE

RESERVOIR RD NW



1980

OXON CREEK
TOWNHOMES



2001

WHEELER CREEK



2008

ASHEFORD COURT

1516 MISSISSIPPI AVE SE



2013

FOXHALL RIDGE TOWNS



2015

PARKSIDE NE



2009

PARKSIDE NE



2011

5020 C STREET SE



2014

5020 C STREET SE



2017

5020 C STREET SE



2018

5913 FOOTE ST NE



1888

301 G ST NW



1897

410 11TH ST NE



1909

1801 WYOMING AVE NW



1919

THE CHASTLETON



1941

FAIRFAX VILLAGE



1953 / 1958

THE BRANDYWINE / THE ALBEMARLE



1967 / 1966

STANTON GARDENS / OXFORD MANOR



1978

1315 5TH ST NW



2004

400 MASS AVE NW - 2004

401 MASS AVE NW - 2008

811 4TH ST NW - 2011



DC Development

BRIANDKRAFT.BLOG

BRIANDKRAFT@GMAIL.COM