



DC PRESERVATION LEAGUE

Preservation in Washington, DC

Rebecca Miller, Executive Director

DON'T TEAR IT DOWN

RECYCLE
THE OLD
POST OFFICE



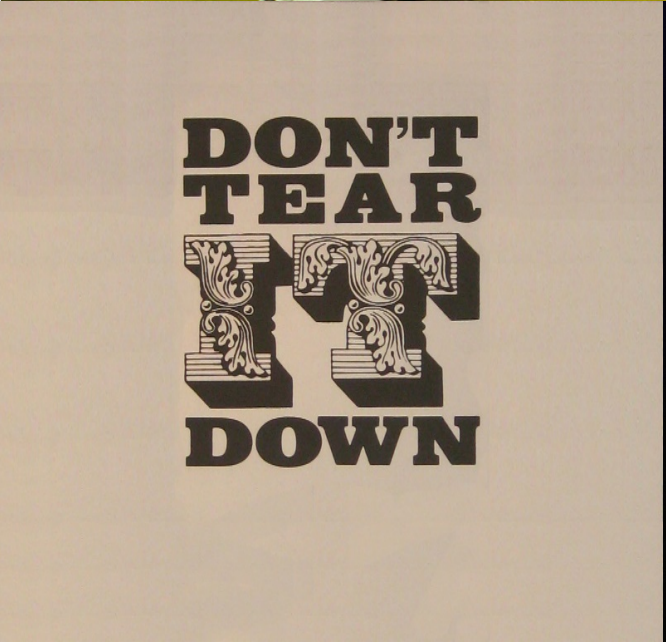
Founded in 1971 to save the Old Post Office
on Pennsylvania Avenue from Demolition.

DON'T TEAR IT DOWN

**DON'T
TEAR
IT
DOWN**

MINATOWN
TROPICALS





MISSION

The mission of the DC Preservation League is to preserve, protect, and enhance the historic and built environment of Washington, DC, through advocacy and education.



COMMITTEES



Education

Development

**Government
Affairs**

Landmarks

**Project
Review**

EDUCATION

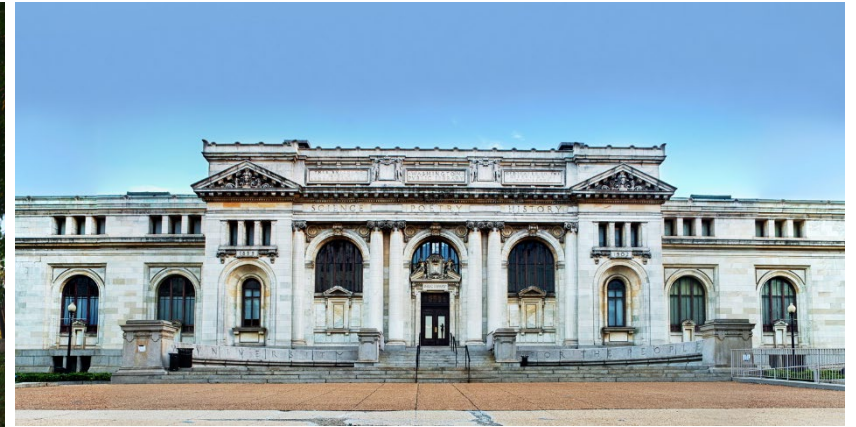


Trolley Relic Ride with Bicyclespace DC



St. Elizabeths West Campus

EDUCATION: MOST ENDANGERED PLACES



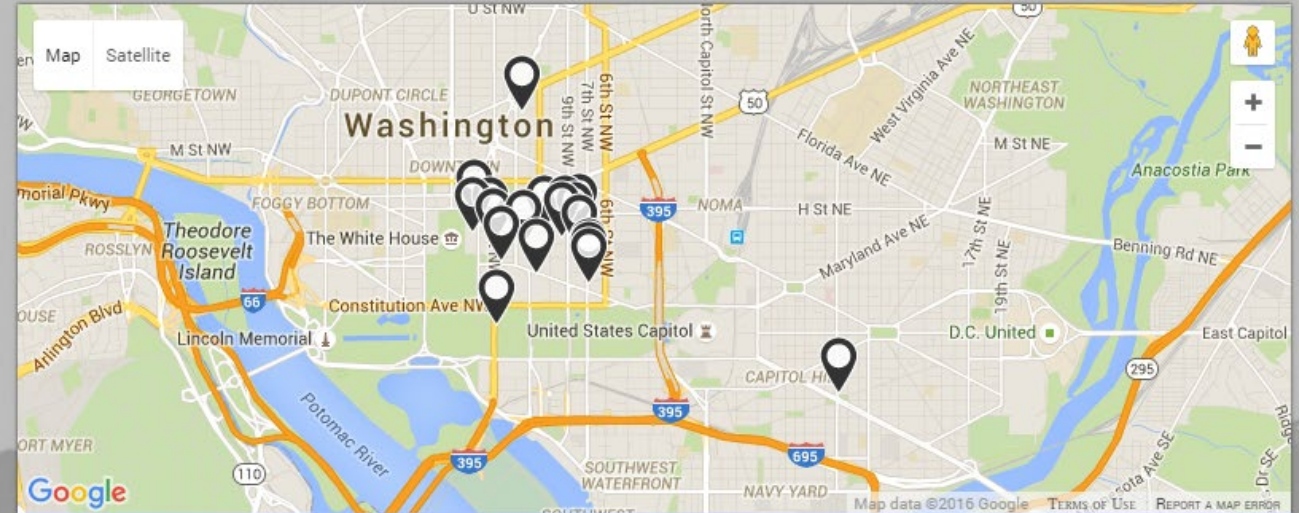


historicsites.dcpreservation.org



SEARCH SITES

HOME SITES TOURS ABOUT



Fullscreen Map

DOWNTOWN HISTORIC DISTRICT

TOUR CURATED BY: DC PRESERVATION LEAGUE

This tour will explore the diverse collection of buildings located in Washington's historic commercial core. The Downtown district lies at the heart of the federal city, as laid out in 1791 by the French engineer and Washington city planner, Pierre L'Enfant. Downtown was traversed, bisected, and bounded by the city's newly established transportation routes such as Pennsylvania Ave and 7th Street. Throughout this tour, you will see the federal government's choice of classical

DEVELOPMENT



Beatles 50th Anniversary

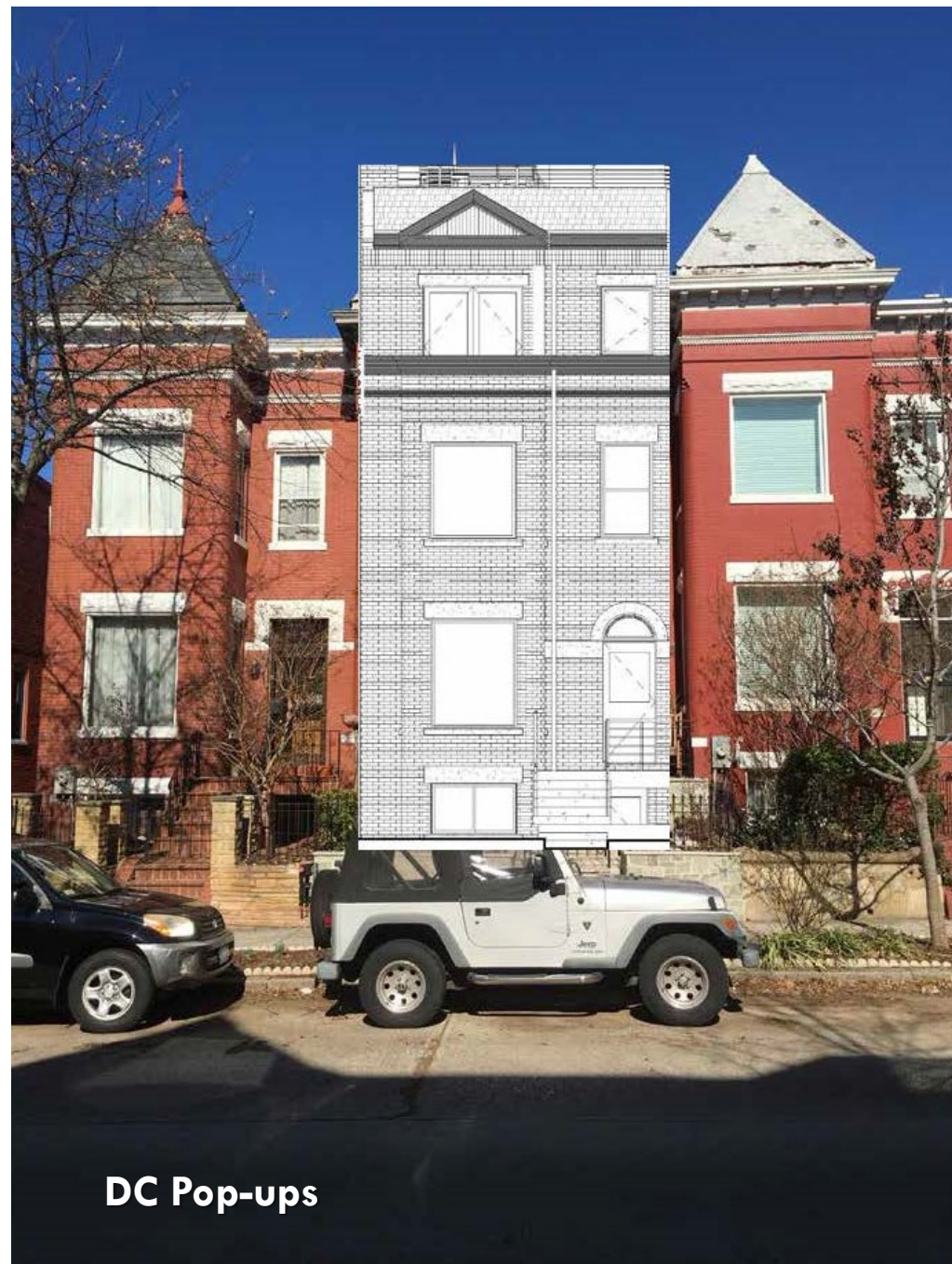


2014 DC Preservation Awards

GOVERNMENT AFFAIRS



Anacostia - Demolition by Neglect



DC Pop-ups

LANDMARKS



Recorder of Deeds Building



Gatehouse to Corcoran Estate



African American Civil Rights in the 20th Century in Washington, DC

Multiple Property Document Project

This project contextualizes and identifies themes and historic sites related to the civil rights movement in DC. It will catalyze local nominations to both the DC Inventory of Historic Sites and the National Register of Historic Places.

Project Consultants:



Prologue DC

**QUINN
EVANS**

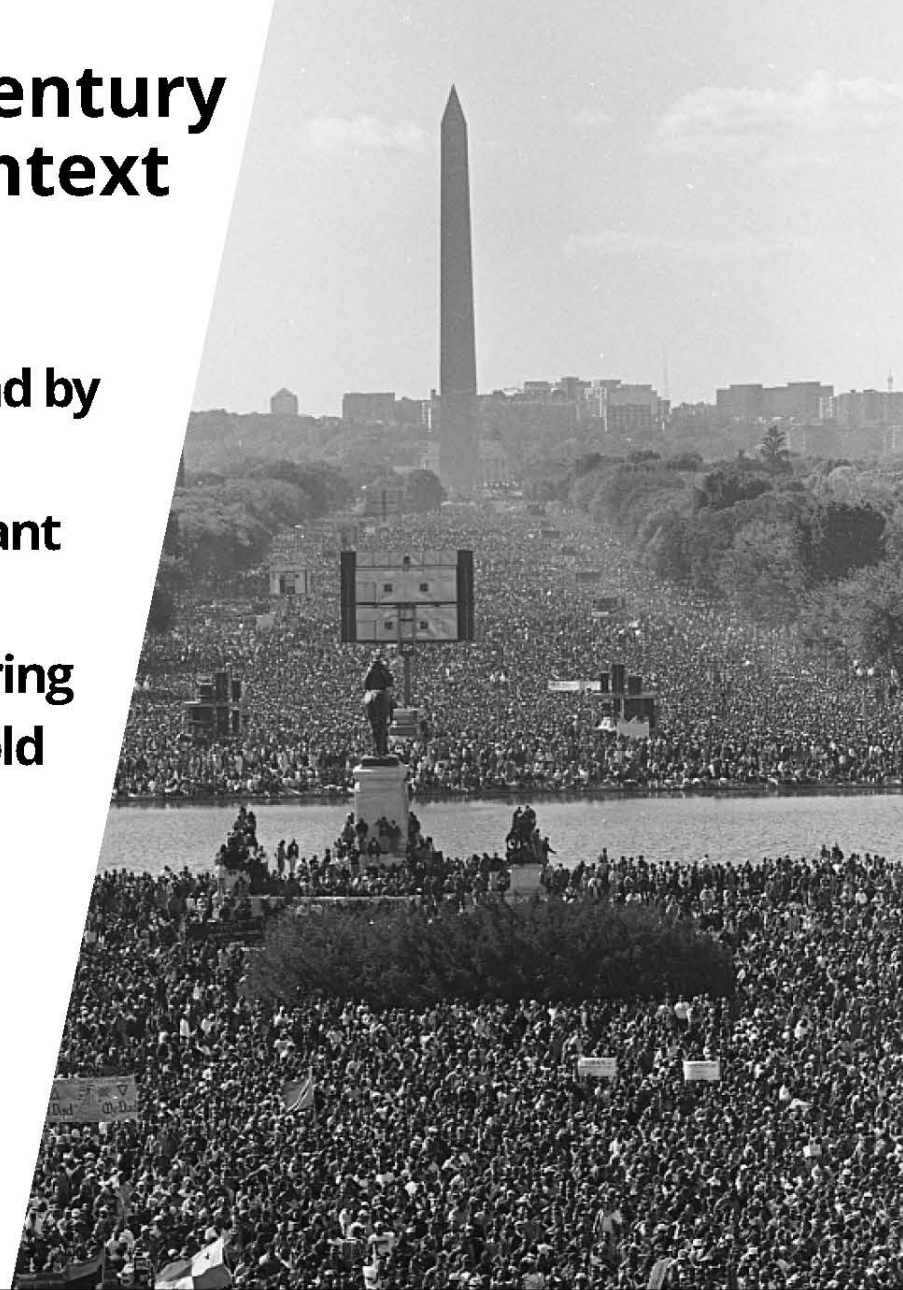
Chris Myers Asch
Amber Wiley, Ph.D

Black Power in 20th Century Washington, DC: A Context Study

This study will be the first of its kind by exploring the DC Black Power Movement. It will identify important places used by activists in the movement and ultimately, help bring more awareness to the often untold stories of these organizations.

**BLACK
POWER!** 

*Photo Credit: New York Public Library Black Power
Exhibition Guide*



*Aerial view of Million Man March on October 16,
1995. Photo by Maureen Keating. Courtesy of the
Library of Congress.*



*This site was previously home to the Washington
Chapter of the Black Panther Party's Community
Information Center. Photo by DCPL, 2019.*

Women's History and Suffrage in Washington, DC Context Study

This study will help piece together the stories of women suffragists in the District who are currently underrepresented on the DC Inventory of Historic Sites and National Register of Historic Places.



Mary Church Terrell House in 1979 by Walter Smalling. Historic American Buildings Survey, Library of Congress.



Belmont-Paul Women's Equality National Monument in 2010. Photo by Carol M. Highsmith, Library of Congress.



Official program for the Woman Suffrage Procession on March 3, 1913. Courtesy of the Library of Congress.



On Leong Chinese Merchants Association Building in 2010 by Carol M. Highsmith. Library of Congress.



The Old Korean Legation Building, 1889. (13th & Logan Circle NW). Source: Yonsei University Museum.

Historic Context Study on the History and Heritage of the Chinese and Korean Communities of Washington, DC.

This study will identify important sites and themes in DC history related to Asian American and Pacific Islander communities in the nation's capital. The first phase will focus on Chinese and Korean communities.

Project Consultant:



1882
FOUNDATION

LGBTQ Context Study and Associated Nominations

Initiated by the DC Historic Preservation Office and in collaboration with DCPL, this study explores the history of DC's LGBTQ+ community and highlights important themes and historic sites that represent these stories.

The Slowe-Burrill House was designated as a DC Landmark in April 2020.

In December 2020, Annie's Paramount Steakhouse was designated as a DC Landmark.

The designation of both sites is associated with this study.



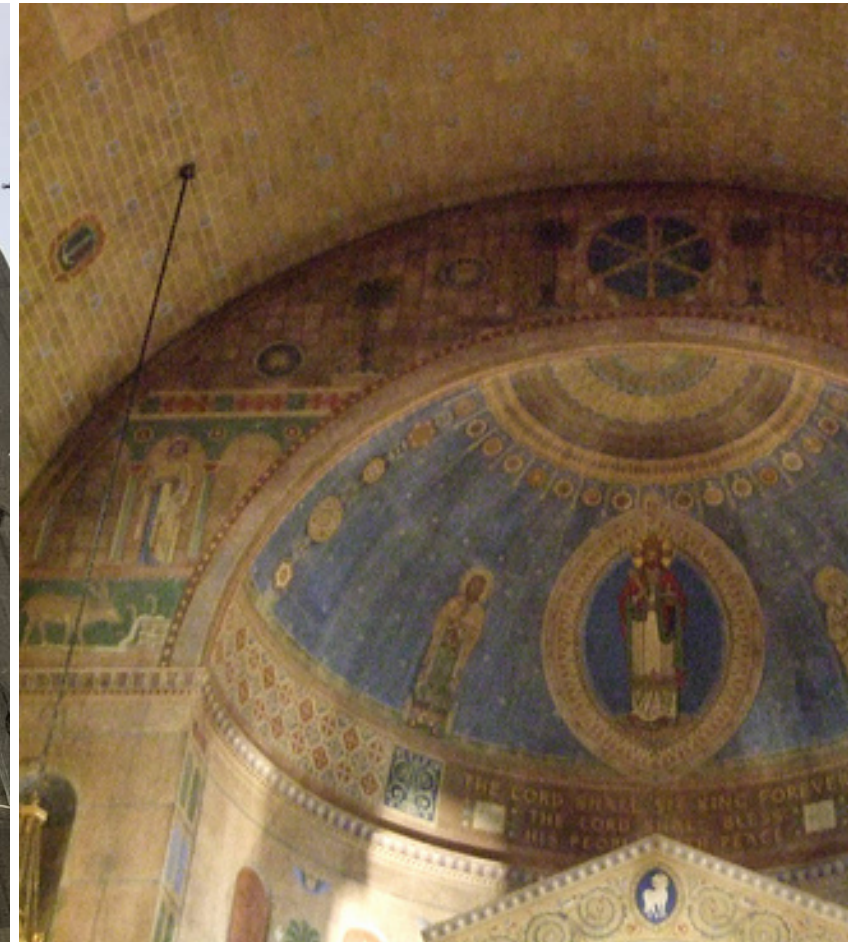
The Lucy Slowe and Mary Burrill House.



Annie's Paramount Steakhouse; 1519 17th St NW (1948-1985), 1609-1611 17th St NW (1985-present)



preservation
initiatives grant



ZONING VS. HISTORIC DISTRICT

Zoning regulations and Historic Districts are used by the District of Columbia to control and direct the development of properties.

Zoning:

- Specific requirements as to the type of buildings allowed
- Restrictions on accessory buildings, building setbacks from the streets and other boundaries
- Size and height of buildings
- Number of units

Historic Districts:

- Preserve the historic physical pattern, the architectural history, the historic diversity of housing in the district
- Ensure exterior renovations, new development and construction are consistent with the characteristics of the district

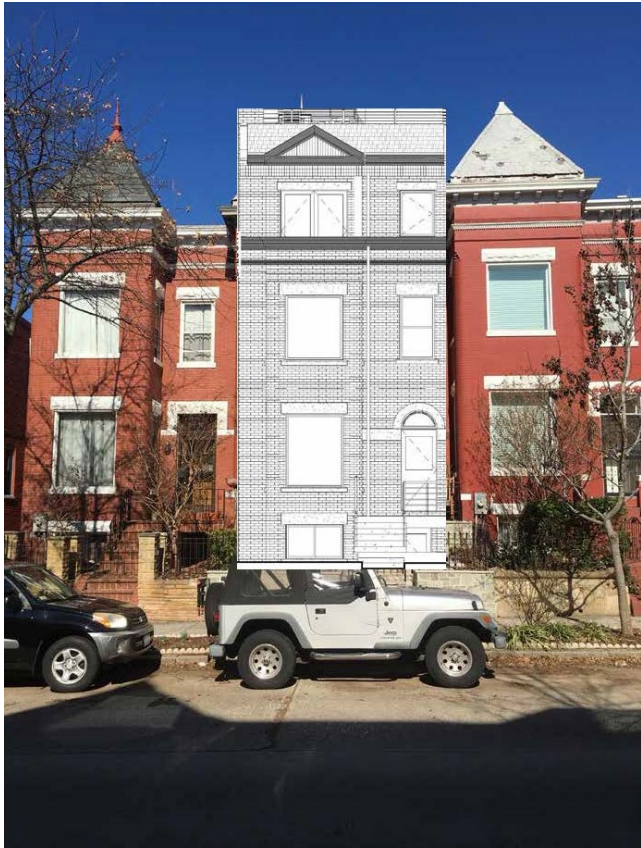
WHY PRESERVATION WORKS

- 1. Local districts protect the investments of owners and residents of historic properties by stabilizing property values.**
- 2. Local districts encourage better quality design.**
- 3. Local districts help the environment.**
- 4. Local districts are energy-efficient.**
- 5. Historic districts are a vehicle for education.**
- 6. Protecting local historic districts can enhance small business recruitment potential.**
- 7. Local districts give communities a voice in their future.**

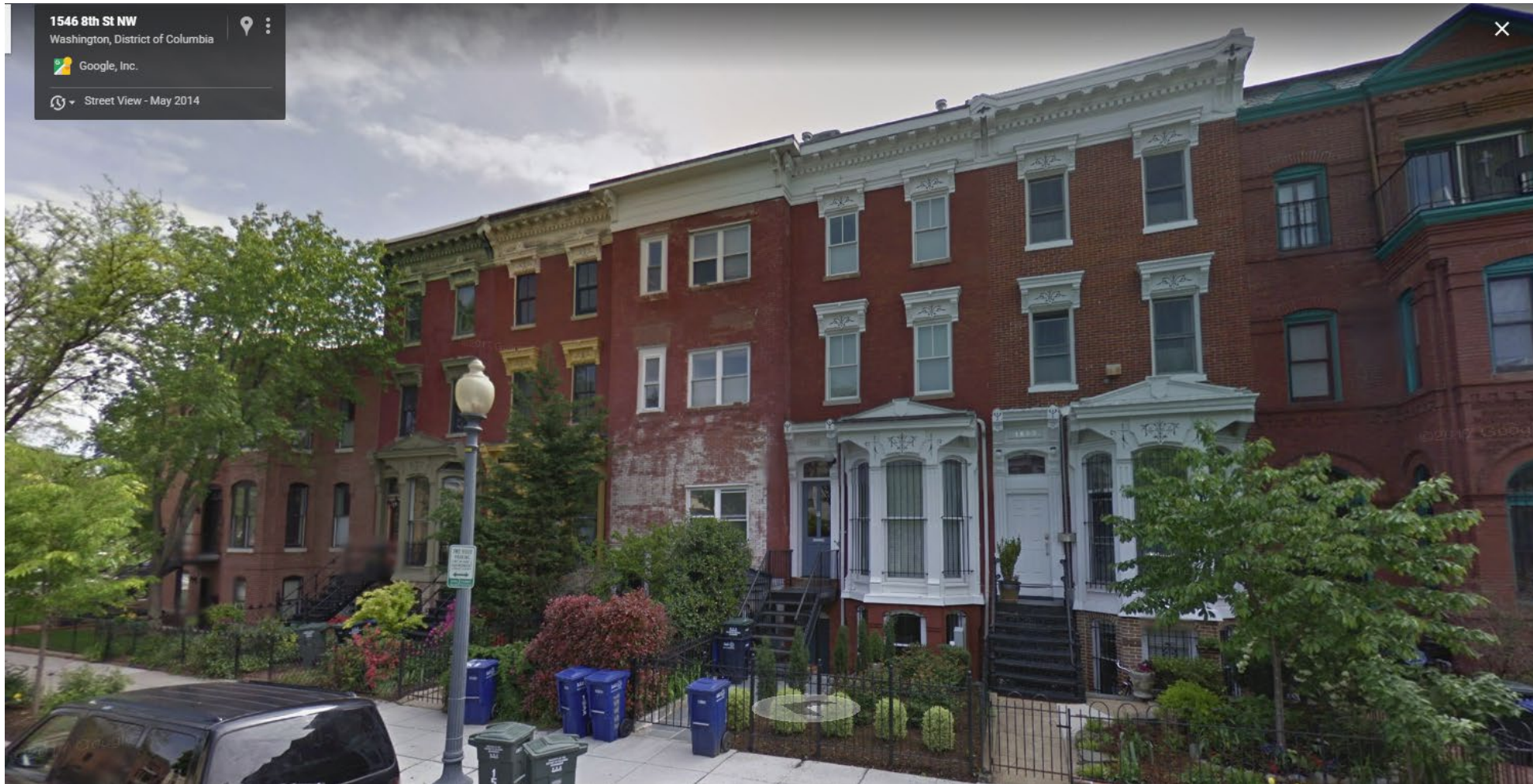
HISTORIC DISTRICTS PROTECT YOUR INVESTMENT.



HISTORIC DISTRICTS PROTECT YOUR INVESTMENT.



HISTORIC DISTRICTS PROTECT YOUR INVESTMENT.





DC PRESERVATION LEAGUE
www.dcpreservation.org