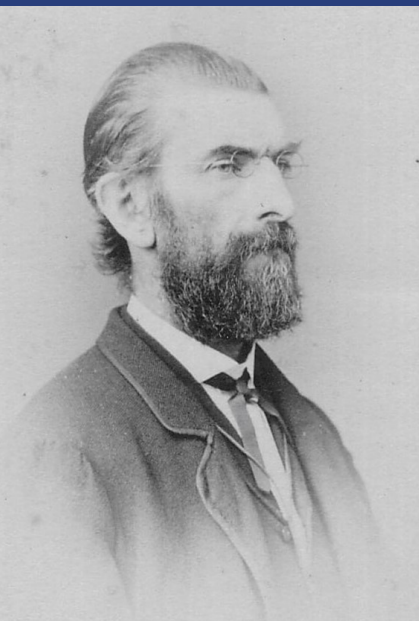


CAN YOU NAME FIVE D.C. ARCHITECTS?



WE CAN HELP YOU OUT.

D.C. ARCHITECTS TO KNOW SERIES: PART THREE





ADOLF CLUSS (1825-1905)

About:

- Born in Heilbronn, Germany
- Designed in Renaissance Revival, Romanesque Revival, Second Empire styles
- Designs for Franklin and Wallach Schools won awards at international expositions and the 1876 Philadelphia Centennial

Buildings Designed:

- Benjamin Franklin School (and Interior), 925 13th St NW (DC Inventory, National Register, National Historic Landmark)
- Eastern Market (and Interior), 7th and C Streets SE (DC Inventory, National Register)
- Arts and Industries Building, 900 Jefferson Dr. SW (DC Inventory, National Register, National Historic Landmark)

5 DC ARCHITECTS TO KNOW

Photo Courtesy of Wikimedia Commons



Photo Courtesy of DCPL Photo Archive

BENJAMIN FRANKLIN SCHOOL, 1869

Designed by Adolf Cluss

JULES HENRI DE SIBOUR (1872-1938)

About:

- Born in Paris, France
- Designed in Classical Revival style
- Trained in architecture in both the United States and France before settling in DC

Buildings Designed:

- McCormick Apartments, 1785 Massachusetts Ave NW (DC Inventory, National Register, National Historic Landmark)
- Hammond Residence (French Ambassador's Residence), 2221 Kalorama Rd NW (Sheridan-Kalorama Historic District)
- Clarence Moore Residence (Embassy of Uzbekistan), 1746 Massachusetts Ave NW (DC Inventory, National Register)

5 DC ARCHITECTS TO KNOW

Photo Courtesy of James Goode Manuscript Files, Historical Society of Washington

Photo Courtesy of DCPL Photo Archive



MCCORMICK APARTMENTS, 1915

Designed by Jules Henri de Sibour



ARTHUR B. HEATON (1875-1951)

About:

- Born in Washington, DC
- Designed in Traditional English and Italian styles, Colonial Revival, Art Moderne, Beaux Arts styles
- Greatly inspired by historic cathedral architecture throughout Europe

Buildings Designed:

- Washington Railway and Electric Company (WRECO) Garage, 2112 Georgia Ave NW (DC Inventory, National Register)
- The Equitable Cooperative Building, 915 F St NW (DC Inventory, National Register)
- Babcock-Macomb House (Embassy of Cape Verde), 3415 Massachusetts Ave NW (DC Inventory, National Register)

5 DC ARCHITECTS TO KNOW

Photo Courtesy of the Washington Evening Star



EQUITABLE COOPERATIVE BUILDING, 1912

Designed by Arthur B. Heaton

Photo Courtesy of DCPL Photo Archive



HILYARD ROBINSON (1899-1986)

About:

- Born in Washington, DC
- Designed in Colonial Revival, Art Moderne, Art Deco styles
- Designed the first government-funded housing complex (Langston Terrace) in DC; second in the U.S.

Buildings Designed:

- Langston Terrace, 21st St and Benning Rd NE (DC Inventory, National Register)
- Ralph Bunche House, 1510 Jackson St NE (DC Inventory, National Register)
- Howard University campus buildings, 2400 6th St NW

5 DC ARCHITECTS TO KNOW

Photo Courtesy of New York Public Library

*Designed by
Hilyard Robinson*



LANGSTON TERRACE, 1938

Photos Courtesy of DCPL Photo Archive

NATIONAL METROPOLITAN BANK, 1939

*Designed by B.
Stanley Simmons*





B. STANLEY SIMMONS (1872-1931)

About:

- Born in Charles County, MD
- Designed in Beaux Arts, Georgian Revival, Gothic Revival styles
- Due to his passion for automobiles, he designed the first purpose-built automobile showrooms in DC

Buildings Designed:

- The Oswego and the Exeter, 1326-8 and 1330 U St NW (DC Inventory)
- National Metropolitan Bank, 613 15th St NW (DC Inventory and National Register)
- The Wyoming, 2022 Columbia Rd NW (DC Inventory and National Register)

5 DC ARCHITECTS TO KNOW

Photo Courtesy of Historical Society of Washington, DC