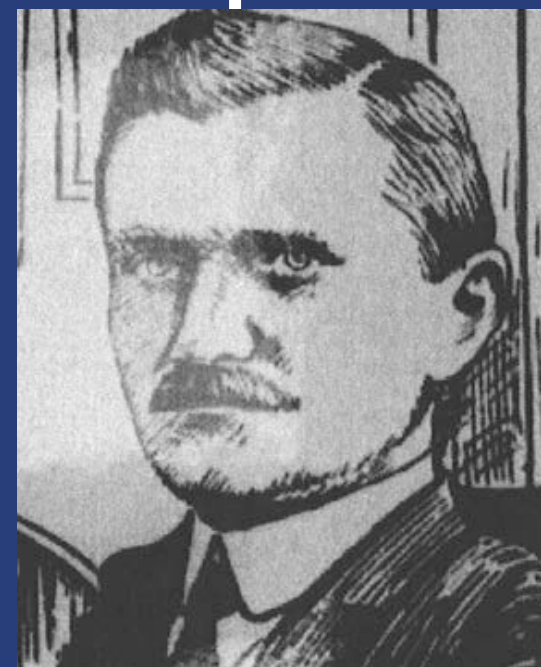
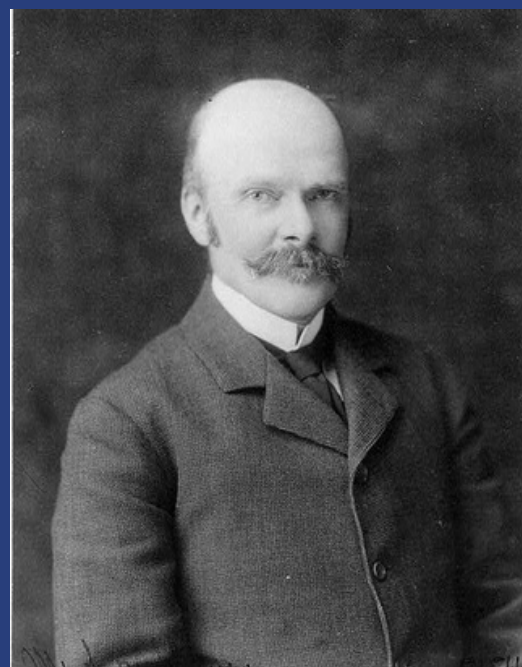


# CAN YOU NAME FIVE D.C. ARCHITECTS?

**WE CAN HELP YOU OUT.**

**D.C. ARCHITECTS TO KNOW SERIES: PART FOUR**





# ALVIN L. AUBINOE (1903-1974)

## About:

- Born in Washington, DC
- Designed in Art Deco, Streamline Moderne, and Modernist styles
- Studied Engineering at the University of Maryland before working for developer Morris Cafritz

## Buildings Designed:

- The Wire Building, 1000-1014 Vermont Ave. NW (DC Inventory and National Register)
- The Hightowers, 1530 16th St. NW (DC Inventory)
- Dupont Plaza Hotel, 1500 New Hampshire Ave. NW (DC Inventory)
- The Congressional, 215 Constitution Ave. NE (DC Inventory)



Photo Courtesy of DC Office of Planning

**5 DC ARCHITECTS TO KNOW**

# *WIRE BUILDING, 1949*

*Designed by Alvin L. Aubinoe*



Photo Courtesy of DCPL Photo Archives



HABS No. DC-565-1



# ALBERT H. BEERS

(1859-1911)

## About:

- Born in Bridgeport, CT
- Designed in Arts and Crafts, Mediterranean, Beaux Arts, and Italian Renaissance Revival styles
- Worked as chief architect for developer Harry Wardman from 1903-1911

## Buildings Designed:

- Northumberland Apartments, 2039 New Hampshire Ave. NW (DC Inventory and National Register)
- Wardman Row, 1416-40 R St. NW (DC Inventory and National Register)
- Danzansky Funeral Home, 3501-03 14th St. NW (DC Inventory)
- Dresden Apartments, 2126 Connecticut Ave. NW (Within Sheridan-Kalorama Historic District)

*DRESDEN APARTMENTS,  
1909*





# *NORTHUMBERLAND APARTMENTS, 1910*

*Designed by Albert H. Beers*

Photo Courtesy of DCPL Photo  
Archives



Photo Courtesy of DC Office of Planning

# LEWIS W. GILES, SR. (1894-1974)

## About:

- Born in Amelia County, VA
- Designed in Georgian and Colonial Revival styles
- Studied Architecture at the University of Illinois

## Buildings Designed:

- Alabama Courts, 741 & 747 Alabama Ave. SE
- Giles Residence, 4428 Hunt Pl. NE
- Hirsch Apartments, 1390 Nicholson St. NW
- Church of God Building, 2030 Georgia Ave. NW

**5 DC ARCHITECTS TO KNOW**

# *HIRSCH APARTMENTS, 1940*

*Designed by Lewis W. Giles, Sr.*

Photo Courtesy of DC Office of Planning





# JOSEPH C. HORNBLOWER

(1848-1908)

## About:

- Born in Paterson, NJ
- Designed in Queen Anne, Romanesque, Colonial Revival, and Georgian Revival styles
- Led Department of Architecture at Columbian University (Now George Washington University)

## Buildings Designed::

- George S. Fraser House, 1701 20th St. NW (DC inventory and National Register)
- Natural History Museum, 11th St. and Constitution Ave. NW (DC Inventory and National Register)
- Duncan Phillips House (Phillips Collection), 1612 21st St. NW (DC Inventory and National Register)

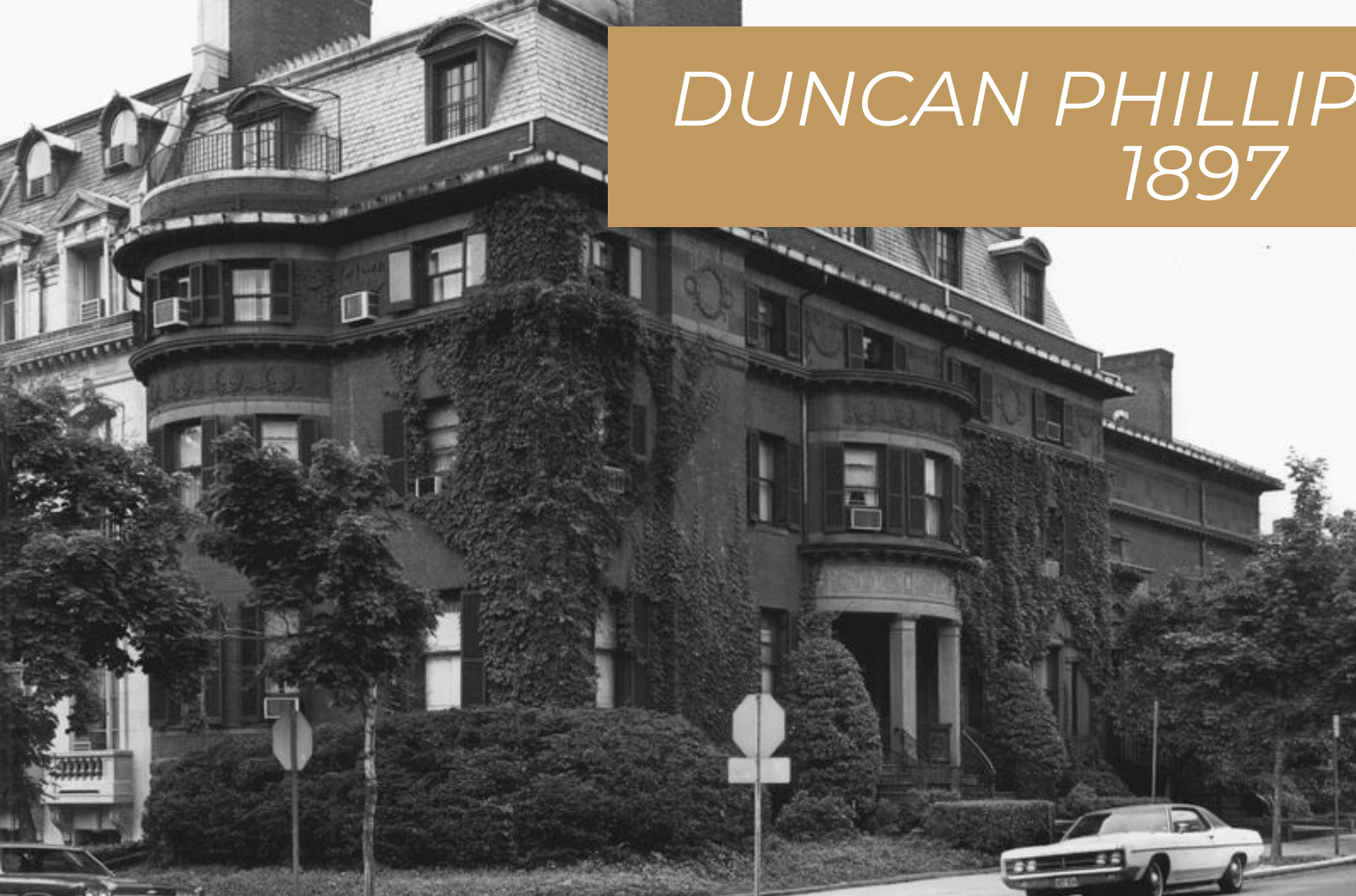
# ***5 DC ARCHITECTS TO KNOW***

Photo Courtesy of Library of Congress



# *DUNCAN PHILLIPS HOUSE, 1897*

*Designed by  
Joseph C.  
Hornblower*



# *EQUITABLE SAVINGS AND LOAN BUILDING, 1912*

*Designed by Frederick B.  
Pyle (and Arthur B.  
Heaton)*





# FREDERICK B. PYLE

(1867-1934)

## About:

- Born in London Grove, PA
- Designed in Colonial Revival, Shingle, Flemish Revival, Spanish Renaissance, Mission, and Beaux Arts styles
- Worked as Architect of the Cleveland Park Company beginning in 1896

## Buildings Designed:

- Equitable Savings and Loan Building, 915 F St. NW (DC Inventory and National Register)
- Tilden Hall, 3945 Connecticut Ave. NW (DC Inventory and National Register)
- 1801 Park Rd. NW (DC Inventory and National Register)
- Pyle House, 3319 Newark St. NW (Within Cleveland Park Historic District)

# ***5 DC ARCHITECTS TO KNOW***

Photo Courtesy of Historical Society of Washington DC